

Average Daily Net Press Run For the Week Ending Nov. 21, 1958 12,835

Manchester Evening Herald

MANCHESTER, CONN., MONDAY, NOVEMBER 24, 1958

(Classified Advertising on Page 18)

The Weather Forecast of U. S. Weather Bureau Cloudy, colder tonight with rain becoming mixed with or changing to snow. Low 25 to 30. Clearing Tuesday. High 35 to 40.

PRICE FIVE CENTS

About Town

Sunset Circle of past noble grand will meet Monday at 8 p.m. for its monthly meeting in directors' room at 60 Old Post road hall. Mrs. Dorothy Fanning and her committee will serve refreshments.

Heard Along Main Street

Older Pay the Toll: An announcement that has been made by the Greater Hartford Bridge Authority and more than a few motorists is that the toll on the new bridge will be 10 cents.

Watch Your Step

One of the best teachers in the Manchester public school system is a former student from the city. At the dinner for new teachers he told about a friend of his, a former student.

Brown Chorus Here Dec. 12

Christmas will be the theme of the Brown University Chorus concert to be presented Friday evening, Dec. 12, in the high school auditorium.

Football Game Manchester High School vs. East Hartford High School

THANKSGIVING DAY, 11:30 A.M. Played at Manchester High School. Adult tickets now on sale at Kett's Variety Store, Fallot Studios, Manchester Plumbing and Supply, Nassif Arms.

Man's Return

Joseph Harwood, the soprano who was featured with the Manchester Chorus last year, is returning to the chorus for the first time.

PTSO Has Panel On Child Guidance

Parents should expect their child guidance committee when he is a member of the PTSO.

State Man Arrested In Bonds Theft Case

New Haven, Nov. 24 (AP)—The governor's secretary, a British executive with receiving several bonds in a bonds theft case.

French Sudan Now Assumes Republic Rank

Paris, Nov. 24 (AP)—The French Sudan proclaimed itself a republic in the French community.

Guinea, Ghana Premiers Agree to Merge Nations

Accra, Ghana, Nov. 24 (AP)—The premier of Guinea, Ahmed Sékou Touré, and Ghana's premier, Kwame Nkrumah, have agreed to merge their nations.

Political Truce By Rockefeller, Nixon Until '60

Washington, Nov. 24 (AP)—Vice President, Nixon and Sen. J. Edgar Hoover, apparently have reached an understanding to stop stepping on each other's political toes until 1960.

Girl Accused Of Hiring Man To Slip Rival

Greenboro, N. C., Nov. 24 (AP)—Barbara Ann Massey, 22, is charged with hiring a man to slip the rival of her father's business.

Parkykarkas, 54, Dies In Hollywood

Hollywood, Nov. 24 (AP)—Harry Dean Parkykarkas, 54, died of a heart attack today in Hollywood.

Rolling Card Game

Constitution on the Long Island National Bank will be used in the evening of the first Friday of the month.

Rolling Card Game

Constitution on the Long Island National Bank will be used in the evening of the first Friday of the month.

Rolling Card Game

Constitution on the Long Island National Bank will be used in the evening of the first Friday of the month.

Rolling Card Game

Constitution on the Long Island National Bank will be used in the evening of the first Friday of the month.

Rolling Card Game

Constitution on the Long Island National Bank will be used in the evening of the first Friday of the month.

Rolling Card Game

Constitution on the Long Island National Bank will be used in the evening of the first Friday of the month.

Rolling Card Game

Constitution on the Long Island National Bank will be used in the evening of the first Friday of the month.

Rolling Card Game

Constitution on the Long Island National Bank will be used in the evening of the first Friday of the month.

Rolling Card Game

Constitution on the Long Island National Bank will be used in the evening of the first Friday of the month.

Rolling Card Game

Constitution on the Long Island National Bank will be used in the evening of the first Friday of the month.

Rolling Card Game

Constitution on the Long Island National Bank will be used in the evening of the first Friday of the month.

Rolling Card Game

Constitution on the Long Island National Bank will be used in the evening of the first Friday of the month.

Rolling Card Game

Constitution on the Long Island National Bank will be used in the evening of the first Friday of the month.

Rolling Card Game

Constitution on the Long Island National Bank will be used in the evening of the first Friday of the month.

Rolling Card Game

Constitution on the Long Island National Bank will be used in the evening of the first Friday of the month.

Rolling Card Game

Constitution on the Long Island National Bank will be used in the evening of the first Friday of the month.

Rolling Card Game

Constitution on the Long Island National Bank will be used in the evening of the first Friday of the month.

Rolling Card Game

Constitution on the Long Island National Bank will be used in the evening of the first Friday of the month.

Rolling Card Game

Constitution on the Long Island National Bank will be used in the evening of the first Friday of the month.

Rolling Card Game

Constitution on the Long Island National Bank will be used in the evening of the first Friday of the month.

Rolling Card Game

Constitution on the Long Island National Bank will be used in the evening of the first Friday of the month.

Rolling Card Game

Constitution on the Long Island National Bank will be used in the evening of the first Friday of the month.

Rolling Card Game

Constitution on the Long Island National Bank will be used in the evening of the first Friday of the month.

Rolling Card Game

Constitution on the Long Island National Bank will be used in the evening of the first Friday of the month.

Rolling Card Game

Constitution on the Long Island National Bank will be used in the evening of the first Friday of the month.

Rolling Card Game

Constitution on the Long Island National Bank will be used in the evening of the first Friday of the month.

Rolling Card Game

Constitution on the Long Island National Bank will be used in the evening of the first Friday of the month.

Rolling Card Game

Constitution on the Long Island National Bank will be used in the evening of the first Friday of the month.

Rolling Card Game

Constitution on the Long Island National Bank will be used in the evening of the first Friday of the month.

Rolling Card Game

Constitution on the Long Island National Bank will be used in the evening of the first Friday of the month.

Rolling Card Game

Constitution on the Long Island National Bank will be used in the evening of the first Friday of the month.

Rolling Card Game

Constitution on the Long Island National Bank will be used in the evening of the first Friday of the month.

Rolling Card Game

Constitution on the Long Island National Bank will be used in the evening of the first Friday of the month.

Rolling Card Game

Constitution on the Long Island National Bank will be used in the evening of the first Friday of the month.

Rolling Card Game

Constitution on the Long Island National Bank will be used in the evening of the first Friday of the month.

Rolling Card Game

Constitution on the Long Island National Bank will be used in the evening of the first Friday of the month.

Rolling Card Game

Constitution on the Long Island National Bank will be used in the evening of the first Friday of the month.

Rolling Card Game

Constitution on the Long Island National Bank will be used in the evening of the first Friday of the month.

Rolling Card Game

Constitution on the Long Island National Bank will be used in the evening of the first Friday of the month.

Rolling Card Game

Constitution on the Long Island National Bank will be used in the evening of the first Friday of the month.

Rolling Card Game

Constitution on the Long Island National Bank will be used in the evening of the first Friday of the month.

Rolling Card Game

Constitution on the Long Island National Bank will be used in the evening of the first Friday of the month.

Rolling Card Game

Constitution on the Long Island National Bank will be used in the evening of the first Friday of the month.

Rolling Card Game

Constitution on the Long Island National Bank will be used in the evening of the first Friday of the month.

Rolling Card Game

Constitution on the Long Island National Bank will be used in the evening of the first Friday of the month.

Rolling Card Game

Constitution on the Long Island National Bank will be used in the evening of the first Friday of the month.

Rolling Card Game

Constitution on the Long Island National Bank will be used in the evening of the first Friday of the month.

Rolling Card Game

Constitution on the Long Island National Bank will be used in the evening of the first Friday of the month.

Rolling Card Game

Constitution on the Long Island National Bank will be used in the evening of the first Friday of the month.

Rolling Card Game

Constitution on the Long Island National Bank will be used in the evening of the first Friday of the month.

Rolling Card Game

Constitution on the Long Island National Bank will be used in the evening of the first Friday of the month.

Rolling Card Game

Constitution on the Long Island National Bank will be used in the evening of the first Friday of the month.

Rolling Card Game

Constitution on the Long Island National Bank will be used in the evening of the first Friday of the month.

Rolling Card Game

Constitution on the Long Island National Bank will be used in the evening of the first Friday of the month.

Rolling Card Game

Constitution on the Long Island National Bank will be used in the evening of the first Friday of the month.

Rolling Card Game

Constitution on the Long Island National Bank will be used in the evening of the first Friday of the month.

Rolling Card Game

Constitution on the Long Island National Bank will be used in the evening of the first Friday of the month.

Rolling Card Game

Constitution on the Long Island National Bank will be used in the evening of the first Friday of the month.

Rolling Card Game

Constitution on the Long Island National Bank will be used in the evening of the first Friday of the month.

Rolling Card Game

Constitution on the Long Island National Bank will be used in the evening of the first Friday of the month.

Rolling Card Game

Constitution on the Long Island National Bank will be used in the evening of the first Friday of the month.

Rolling Card Game

Constitution on the Long Island National Bank will be used in the evening of the first Friday of the month.

Rolling Card Game

Constitution on the Long Island National Bank will be used in the evening of the first Friday of the month.

Rolling Card Game

Constitution on the Long Island National Bank will be used in the evening of the first Friday of the month.

Rolling Card Game

Constitution on the Long Island National Bank will be used in the evening of the first Friday of the month.

Rolling Card Game

Constitution on the Long Island National Bank will be used in the evening of the first Friday of the month.

Rolling Card Game

Constitution on the Long Island National Bank will be used in the evening of the first Friday of the month.

Rolling Card Game

Constitution on the Long Island National Bank will be used in the evening of the first Friday of the month.

SHOPPERS' SPECIAL MONDAY ONLY!

Wrought Iron Reg. 98c

WORLD GREEN STAMPS FAIRWAY

975 MAIN STREET—MI 3-1212

IT'S CHRISTMAS CLUB TIME

SAVE 50c \$1 \$2 \$3 \$5 \$10 \$20 Weekly

RECEIVE \$25 \$50 \$100 \$150 \$250 \$500 \$1,000

STANER'S NATIONAL BANK

595 MAIN STREET • MANCHESTER, CONN.

BANKING HOURS Monday thru Friday 9:30-3:00

Thursday Evenings 6:00-8:00 Saturday Mornings 9:15-12:00

Model 21C21

Model 21C14

Model 21C34

Model 21C14

Model 21C34

Model 21C14

Model 21C34

Model 21C14

Model 21C34

Model 21C14

Model 21C34

Model 21C14

Model 21C34

Model 21C14

Model 21C34

Model 21C14

Model 21C34

Model 21C14

Model 21C34

Model 21C14

Model 21C34

Model 21C14

Model 21C34

Model 21C14

Model 21C34

Model 21C14

Model 21C34

Model 21C14

Model 21C34

Model 21C14

Model 21C34

Model 21C14

Model 21C34

Model 21C14

Model 21C34

Model 21C14

Model 21C34

Model 21C14

Model 21C34

Model 21C14

Model 21C34

Model 21C14

Model 21C34

Model 21C21

Model 21C14

Model 21C34

Model 21C14

Model 21C34

Model 21C14

Model 21C34

Model 21C14

Model 21C34

Model 21C14

Model 21C34

Model 21C14

Model 21C34

Model 21C14

Model 21C34

Model 21C14

Model 21C34

Model 21C14

Model 21C34

Model 21C14

Model 21C34

Model 21C14

Model 21C34

Model 21C14

Model 21C34

Model 21C14

Model 21C34

Model 21C14

Model 21C34

Model 21C14

Model 21C34

Model 21C14

Model 21C34

Model 21C14

Model 21C34

Model 21C14

Model 21C34

Model 21C14

Model 21C34

Model 21C14

Model 21C34

Model 21C14

Model 21C34



Troubles Building For Town Builder

Troubles are building up for Manchester builder Earl E. Roberts, 34, of 81 Elmwood...

Silk Town Notes and Quotes

Frank Gray of 18 Foxcroft Dr. has completed 20 years of service with the W. W. England...

Symphony Next In CMA Series

The National Symphony Orchestra will perform Saturday in Manchester High School at 8:15 p.m.

Parlykarkas, 54, Dies in Hollywood

For two hours they kept his heart pumping by their manipulation but there was no answering response from Einstein's heart...

Sheinwold on Bridge

FINESSE SEIZES OUT DOWNTOWN. By Alfred Goldman. When only one of the opponents is dangerous you must try to keep him out of the lead...

Andover Church Dedicates Wing to Former Pastor

The enlarged sanctuary of the First Congregational Church was nearly filled yesterday when about 2000 people attended the dedication services...

Science Shrinks Piles

Findings of a new study indicate that a new substance called "Shrink-A-Pile" can reduce the size of hemorrhoids...

Pinhurst Holiday Schedule

OPEN TUES. and WED. NIGHTS UNTIL 8 P.M. TURKEYS we will have hundreds of SWIFT'S Premium Frozen Eviscerated Butter Ball Turkeys...

Marlborough Tavern

★ ★ 1740 ★ ★ HOTEL and COACH ROOM Open All Year—Every Day

Yule Parade Line-Up Set

The official line-up for the annual Children's Christmas Parade was announced today by the retail division of the Chamber of Commerce...

Arms Aid, Security

White House, Eisenhower told Dr. Sprague that after eight years of national defense effort, it is appropriate to evaluate the results...

Stanelek Laboratories

Each purchase made here is backed by dependable STANEK SERVICE

Public Records

Warranted Deeds: Harold M. Allard to Joseph T. and Laura C. Bell, property on S. Lakewood Circle...

Capons Fryers

SWIFT'S PREMIUM STUFFED TURKEYS. BUTTER BALL HEN TURKEYS 12 Lbs. And Over 1 lb. 45c

Walnut Restaurant

THANKSGIVING DAY MENU. Choice of: Fresh Shrimp Cocktail - Fresh Fruit Compote on Half Shrimp...

MOR-SUN

INSTALLERS. WEAVING IS OUR BUSINESS. CHADWICK & CO. 504 CENTER ST.—MI 9-0600

Capons Fryers

SWIFT'S PREMIUM STUFFED TURKEYS. BUTTER BALL HEN TURKEYS 12 Lbs. And Over 1 lb. 45c

Walnut Restaurant

THANKSGIVING DAY MENU. Choice of: Fresh Shrimp Cocktail - Fresh Fruit Compote on Half Shrimp...

MOR-SUN

INSTALLERS. WEAVING IS OUR BUSINESS. CHADWICK & CO. 504 CENTER ST.—MI 9-0600

Capons Fryers

SWIFT'S PREMIUM STUFFED TURKEYS. BUTTER BALL HEN TURKEYS 12 Lbs. And Over 1 lb. 45c

Walnut Restaurant

THANKSGIVING DAY MENU. Choice of: Fresh Shrimp Cocktail - Fresh Fruit Compote on Half Shrimp...

MOR-SUN

INSTALLERS. WEAVING IS OUR BUSINESS. CHADWICK & CO. 504 CENTER ST.—MI 9-0600

Capons Fryers

SWIFT'S PREMIUM STUFFED TURKEYS. BUTTER BALL HEN TURKEYS 12 Lbs. And Over 1 lb. 45c

Walnut Restaurant

THANKSGIVING DAY MENU. Choice of: Fresh Shrimp Cocktail - Fresh Fruit Compote on Half Shrimp...

MOR-SUN

INSTALLERS. WEAVING IS OUR BUSINESS. CHADWICK & CO. 504 CENTER ST.—MI 9-0600

Political Truce By Rockefeller, Nixon Until '60

That Rockefeller will not lend his support to any stop-Nixon move such as Harold E. Stassen is trying to get off the ground...

Head's Drive

Dr. Eugene Davis of 345 Porter St. has been re-appointed Manchester area chairman for the Connecticut chapter of the Blind...

Property Lined In Divorce Suit

A \$7,500 attachment has been placed on property at Henlock & Main Sts. owned by Howard S. Harvey...

YOUNG MAN

Are you between 21 and 35 years old? Do you want to broaden yourself as a leader and a public speaker while improving your community?

Stanelek Laboratories

Each purchase made here is backed by dependable STANEK SERVICE

YOUNG MAN

Are you between 21 and 35 years old? Do you want to broaden yourself as a leader and a public speaker while improving your community?

Stanelek Laboratories

Each purchase made here is backed by dependable STANEK SERVICE

YOUNG MAN

Are you between 21 and 35 years old? Do you want to broaden yourself as a leader and a public speaker while improving your community?

Stanelek Laboratories

Each purchase made here is backed by dependable STANEK SERVICE

YOUNG MAN

Are you between 21 and 35 years old? Do you want to broaden yourself as a leader and a public speaker while improving your community?

Stanelek Laboratories

Each purchase made here is backed by dependable STANEK SERVICE

YOUNG MAN

Are you between 21 and 35 years old? Do you want to broaden yourself as a leader and a public speaker while improving your community?

Stanelek Laboratories

Each purchase made here is backed by dependable STANEK SERVICE

YOUNG MAN

Are you between 21 and 35 years old? Do you want to broaden yourself as a leader and a public speaker while improving your community?

Stanelek Laboratories

Each purchase made here is backed by dependable STANEK SERVICE

YOUNG MAN

Are you between 21 and 35 years old? Do you want to broaden yourself as a leader and a public speaker while improving your community?

Stanelek Laboratories

Each purchase made here is backed by dependable STANEK SERVICE

YOUNG MAN

Are you between 21 and 35 years old? Do you want to broaden yourself as a leader and a public speaker while improving your community?

PRESORPTIONS 75 Years Combined Experience by Our Pharmacists. Miller Pharmacy 259 Green Rd.—MI 8-1434

EX-5 DRAINPIPE CLEANER. bacterial. SAFE EASY-TO-USE NON-CORROSIVE. Larson's Hardware 34 Depot Sq.—Manchester

ARTHRITIS-RHEUMATISM VITAL FACTS EXPLAINED. FREE DESCRIPTIVE BOOK. Larson's Hardware 34 Depot Sq.—Manchester

TRIFARI introduces (in sick form) Trifari a fabulous new perfume on its own charm bracelet! Michaels 333 MAIN ST., MANCHESTER

YOUNG MAN Are you between 21 and 35 years old? Do you want to broaden yourself as a leader and a public speaker while improving your community? IF THE ANSWER IS "YES" TO BOTH QUESTIONS PLAN ON ATTENDING THE MANCHESTER JUNIOR CHAMBER OF COMMERCE MEMBERSHIP SMOKER

DON'T Throw Them Still plenty of wear left in shoes when brought here for expert repairs. WORK DONE WHILE YOU WAIT. SAM YULYUS "SHOE REPAIRING OF THE BETTER KIND" 33 OAK STREET

TO BE HELD AT THE MANCHESTER COUNTRY CLUB MONDAY, NOV. 24, 8 P.M. Admittance Free

Manchesterville SAVINGS and LOAN ASSOCIATION. JOIN OUR 1959 CHRISTMAS CLUB. Choose the amount that suits your budget—put in your Christmas Club every week. Any amount \$6 to \$10 per week.

Manchesterville SAVINGS and LOAN ASSOCIATION. JOIN OUR 1959 CHRISTMAS CLUB. Choose the amount that suits your budget—put in your Christmas Club every week. Any amount \$6 to \$10 per week.

Manchesterville SAVINGS and LOAN ASSOCIATION. JOIN OUR 1959 CHRISTMAS CLUB. Choose the amount that suits your budget—put in your Christmas Club every week. Any amount \$6 to \$10 per week.

Manchesterville SAVINGS and LOAN ASSOCIATION. JOIN OUR 1959 CHRISTMAS CLUB. Choose the amount that suits your budget—put in your Christmas Club every week. Any amount \$6 to \$10 per week.

Manchesterville SAVINGS and LOAN ASSOCIATION. JOIN OUR 1959 CHRISTMAS CLUB. Choose the amount that suits your budget—put in your Christmas Club every week. Any amount \$6 to \$10 per week.

Manchesterville SAVINGS and LOAN ASSOCIATION. JOIN OUR 1959 CHRISTMAS CLUB. Choose the amount that suits your budget—put in your Christmas Club every week. Any amount \$6 to \$10 per week.

Manchesterville SAVINGS and LOAN ASSOCIATION. JOIN OUR 1959 CHRISTMAS CLUB. Choose the amount that suits your budget—put in your Christmas Club every week. Any amount \$6 to \$10 per week.



Coventry 3 Town Boards Plan Talk on School Issue

Members of three town boards will meet tomorrow night at the town building for a mutual discussion on school housing needs...

Tall Tales by WITTE

Members of three town boards will meet tomorrow night at the town building for a mutual discussion on school housing needs...

Union of West Africa Guinea, Ghana Premiers Agree to Merge Nations

Guinea and Ghana, two nations in the West African region, have agreed to merge into a single state...

Girl Accused Of Hiring Man To Slay Rival

Charlotte Smith, 17, is accused of hiring a man to kill her rival in a case that has attracted national attention...

Do FALSE TEETH Rock, Slide or Slip?

FALSE TEETH, an improved powder is applied on upper or lower teeth to hold them in place...

Columbia Mrs. Soracchi To Head Drive For 15th Time

Atty. Thomas R. Soracchi, who has been appointed chairman for the 15th annual drive for the collection of books...

South Windsor Group Seeks Formation of Savings Assn.

Seven local men who are part of a group trying to establish a savings and loan association here in Washington, D. C. today are looking for a sponsor...

Box of Quarters Causes Murders

New York, Nov. 24 (AP)—Police today said that \$100 worth of quarters apparently was the motive in the murder of a young man and his 2-year-old daughter...

Hooded Pair Rob Watertown Man

Watertown, Nov. 24 (AP)—Police today are looking for two men who robbed a Watertown man in the porch of his home last night and drove off in his car...

Local Stocks table with columns for Bank Stocks, Insurance Companies, and other financial instruments.

JET AIR JOBS! MEN - WOMEN! Exciting Career Opportunities. FREE air travel, good pay, rapid advancement...

SPOTS Before Eyes? Whenever you're sick, go to bed and don't worry. While you're healthy, use CLARIE eye drops...

Front End Special. (1) ALIGN FRONT END REG. \$1.50. (2) BALANCE FRONT END REG. \$1.50. (3) CHECK FRONT WHEEL BEARINGS. (4) CHECK BRAKE SYSTEM. ALL FOUR ONLY \$9.95.

GOOD FOOD and The Right BEVERAGE. ADD TO YOUR ENJOYMENT OF THE HOLIDAY WITH FAMILY AND FRIENDS!

DOOR CANOPIES. Give your home the look of distinction - protect - beautify your home with the year round door-hood from \$29.95.

300 YEARS' ARTHUR DRUG. With extra HOLIDAY CASH. This season may be brighter with extra cash to consolidate bills or purchase the things you want or save. HOT STOP IN TODAY OR HERE.

Church Papers Paper. The Second Congregational Church has issued its Church Newspaper entitled "The Voice of the Bell" through the efforts of Frank Kales of Tolland...

TPC Meets Today On Pending Items. Members of the Town Planning Commission will hold a routine tonight at 8 o'clock.

Use Your Charge Plan For Deliveries. Just telephone your order for drug needs and orders - giving your Charge Plan number.

Oldest ROASTING CHICKENS AND CAPONS. VIGILANTE. 175 EAST CENTER ST. Phone MI 3-1126.

Read Head Advs. MORIARTY BROTHERS. 301-313 CENTER ST. TEL. MI 3-5153.

40 Million Ties Replaced. Chicago, United States railroad replace about 40,000,000 ties a year, spending about \$200,000,000 for the new ties.

40 Million Ties Replaced. Chicago, United States railroad replace about 40,000,000 ties a year, spending about \$200,000,000 for the new ties.

Home Specialties Co. YOUR LOCAL HOME IMPROVEMENT DEALER. BOB BROWN and CHARLIE PRINGLE.

Home Specialties Co. YOUR LOCAL HOME IMPROVEMENT DEALER. BOB BROWN and CHARLIE PRINGLE.

MANCHESTER RESIDENTS. In Our Opinion GAS is the finest heating fuel available. When installed on ROYALTY HEATING.

Waldon's. 501 MAIN ST. - MI 3-5831.

ROGER OLGOTT. 403 West Center Street. Mitchell 3-7853.

"I'm Busy for Your House". At the W. G. Glenny Company you'll find me planning wonderful gift-room presents for families who need more living space.

CHESTER'S FURNITURE and DESIGNERS. REMODEL YOUR OLD FUR COAT INTO A NEW. \$19.95.

NORTH END PACKAGE STORE. 1400 MAIN ST. - MANCHESTER. 265 EAST CENTER ST. - WEST BRANCH.

The Savings Bank of Manchester. ALWAYS PLENTY OF FREE PARKING.

AMAZING NEW PURITRON. HAILED BY DOCTORS FOR RELIEF OF ASTHMA, SINUS, AND ALLERGIES.

For Dessert This Thanksgiving Be Sure To Serve ICE CREAM CAKE. Delicious frozen pudding that's checked full of fruit plus rich cream vanilla ice cream - decorated with Heavy Cream... Will serve sixteen. \$2.50 Per Cake.

Manchester Carpet Center. The Home of Beautiful Carpets. 308 MAIN STREET - MI 9-4343.

W. G. Glenny Co. BUILDING MATERIALS LUMBER FUEL. 336 NORTH MAIN STREET - TEL. 9-5253.

INDICOTT JOHNSON. 356 W. Middle Turnpike, Manchester. 288 Main St., East Hartford 45.

Remodel Your Old Fur Coat Into A New. \$19.95. Call MI 9-7118 or Rockville TR 8-3219.

Automatic and Portable Dishwashing by KitchenAid. Saves time... keeps kitchens tidier makes mealtimes happier.

AMAZING NEW PURITRON. HAILED BY DOCTORS FOR RELIEF OF ASTHMA, SINUS, AND ALLERGIES.

AMAZING NEW PURITRON. HAILED BY DOCTORS FOR RELIEF OF ASTHMA, SINUS, AND ALLERGIES.

ROYAL ICE CREAM CO. MANUFACTURERS OF ORFELLI'S "SPUMONI". 33 WARREN ST. PHONE MI 3-6860.

BOLAND OIL CO. "HOME HEATING SPECIALISTS SINCE 1935" 24 HOUR BURNER SERVICE. 369 Center St., at West Center St., MI 3-6320.

W. G. Glenny Co. BUILDING MATERIALS LUMBER FUEL. 336 NORTH MAIN STREET - TEL. 9-5253.

INDICOTT JOHNSON. 356 W. Middle Turnpike, Manchester. 288 Main St., East Hartford 45.

Remodel Your Old Fur Coat Into A New. \$19.95. Call MI 9-7118 or Rockville TR 8-3219.

Automatic and Portable Dishwashing by KitchenAid. Saves time... keeps kitchens tidier makes mealtimes happier.

AMAZING NEW PURITRON. HAILED BY DOCTORS FOR RELIEF OF ASTHMA, SINUS, AND ALLERGIES.

AMAZING NEW PURITRON. HAILED BY DOCTORS FOR RELIEF OF ASTHMA, SINUS, AND ALLERGIES.







### Alaska to Hold First State Vote

Juneau, Alaska, Nov. 24 (AP)—Between 5,000 and 6,000 voters are expected to vote in the first state election in Alaska on Nov. 24. The vote is expected to be a close one, with the Republican Party leading.

Democratic Party leaders are heavily favored in the betting for the state election. State senators, one congressman, governor, secretary of state and 60 members of Alaska's state legislature.

These second general elections are held in Alaska because of the state's admission to the Union in 1958. The first general election was held in 1956, when the state was admitted to the Union.

The campaign is expected to be one of the most intense in the state's history. The Republican Party is expected to lead, but the Democratic Party is expected to challenge.

### Free Delivery

Delaware, Nov. 24 (AP)—Mrs. Merwin R. R. 42, told her husband when he got married that she would have 10 children. She is nearing her goal.

Saturday, Mrs. R. R.'s 18th child, a 7-pound, 14-ounce boy, was born at St. Paul's Hospital here.

Recalling his wife's statement that she would have 10 children, Mr. R. R. said: "Why? Just because she said so? He said he never made any definite plans, but he was sure she would have 10 children."

Mr. R. R. is a member with a pipe line construction company.

### British Remember Nixon's Troubles

By STEPHEN KLAPPEY  
London, Nov. 24 (AP)—President Richard Nixon comes calling tomorrow on Britain—America's No. 1 ally whose people know little of him.

"Many Britons first became aware of Mr. Nixon when he had the trouble during the 1952 campaign about the money," one Englishman said.

"The last time they were aware of Mr. Nixon was last spring, when he and his wife were being fired from the White House and were written on old exercise books and apparently the work of cranks."

### State Policemen Get Assignments

Among 25 State Policemen assigned to duties after graduation from the state police training school today, three have been assigned to the Hartford Colchester barracks and one to the Springfield barracks.

Assigned to Hartford Springs Barracks: David W. Connor, East Hartford; Russell L. Griswold, Hartford; and John A. Tucker of Montpelier.

Stanley Haddock, Jr., of Montpelier was assigned to the Colchester barracks.

Among such transfers an unusual one was that of Jean W. Francis of New Britain, transferred from Hartford Springs to Hartford, and Stanley A. Holmes of Hartford, transferred from Westbrook to Colchester.

**Top Notch FOODS**

**SECOND BIG WEEK**

**COUPON SALE!**

Clip 'n Save

1150 BURNSIDE AVE., E. HARTFORD  
JUST BEYOND THE MANCHESTER LINE  
OPEN TUESDAY AND WEDNESDAY TILL 9 P.M.

**LAND O'LAKES—BUTTERKNIFE**

**TENDER DELICIOUS TURKEYS**

GUARANTEED U.S.D.A. GRADE "A"

Toms—18 Lbs. And Over Hens—10 to 14 Lbs.

**37¢ lb.** **43¢ lb.**

Every turkey sold at Top Notch is a U.S.D.A. "Grade A" bird, your assurance of the finest quality obtainable and at unbeatable prices, too!

**U. S. CHOICE BONELESS CHUCK ROAST**

**65¢ lb.**

All clear meat! No waste, satisfaction guaranteed.

**MORRELL FAMOUS E-Z CUT COOKED HAMS**

**69¢ lb.**

WHOLE or SHANK HALF

**FRESHER-BY-FAR**

**Rock Turnips** **2**

**Butternut** **2**

**Hubbard** **2**

**Squash** **2**

**CHECK LIST**

**CRANBERRY SAUCE** 2 Tall Cans **35¢**

**PUMPKIN or SQUASH** 2 Tall Cans **19¢**

**WHOLE KOSHER DILLS** 1/2 Gal. **49¢**

**SWEET POTATOES** 2 Giant Vns **49¢**

**SMALL BOILED ONIONS** 2 3/4 Oz. Bns **37¢**

**BATHROOM TISSUE** 12 Rolls **\$1.00**

**ALUMINUM FOIL** 2 25 Ft. Rolls **53¢**

### Daily Radio

The following program schedule is supplied by the radio management and is subject to change without notice.

8:00 AM—Winnipeg News  
8:15 AM—Winnipeg News  
8:30 AM—Winnipeg News  
8:45 AM—Winnipeg News  
9:00 AM—Winnipeg News  
9:15 AM—Winnipeg News  
9:30 AM—Winnipeg News  
9:45 AM—Winnipeg News  
10:00 AM—Winnipeg News  
10:15 AM—Winnipeg News  
10:30 AM—Winnipeg News  
10:45 AM—Winnipeg News  
11:00 AM—Winnipeg News  
11:15 AM—Winnipeg News  
11:30 AM—Winnipeg News  
11:45 AM—Winnipeg News  
12:00 PM—Winnipeg News  
12:15 PM—Winnipeg News  
12:30 PM—Winnipeg News  
12:45 PM—Winnipeg News  
1:00 PM—Winnipeg News  
1:15 PM—Winnipeg News  
1:30 PM—Winnipeg News  
1:45 PM—Winnipeg News  
2:00 PM—Winnipeg News  
2:15 PM—Winnipeg News  
2:30 PM—Winnipeg News  
2:45 PM—Winnipeg News  
3:00 PM—Winnipeg News  
3:15 PM—Winnipeg News  
3:30 PM—Winnipeg News  
3:45 PM—Winnipeg News  
4:00 PM—Winnipeg News  
4:15 PM—Winnipeg News  
4:30 PM—Winnipeg News  
4:45 PM—Winnipeg News  
5:00 PM—Winnipeg News  
5:15 PM—Winnipeg News  
5:30 PM—Winnipeg News  
5:45 PM—Winnipeg News  
6:00 PM—Winnipeg News  
6:15 PM—Winnipeg News  
6:30 PM—Winnipeg News  
6:45 PM—Winnipeg News  
7:00 PM—Winnipeg News  
7:15 PM—Winnipeg News  
7:30 PM—Winnipeg News  
7:45 PM—Winnipeg News  
8:00 PM—Winnipeg News  
8:15 PM—Winnipeg News  
8:30 PM—Winnipeg News  
8:45 PM—Winnipeg News  
9:00 PM—Winnipeg News  
9:15 PM—Winnipeg News  
9:30 PM—Winnipeg News  
9:45 PM—Winnipeg News  
10:00 PM—Winnipeg News  
10:15 PM—Winnipeg News  
10:30 PM—Winnipeg News  
10:45 PM—Winnipeg News  
11:00 PM—Winnipeg News  
11:15 PM—Winnipeg News  
11:30 PM—Winnipeg News  
11:45 PM—Winnipeg News  
12:00 AM—Winnipeg News

**A&P**

**Turkeys**

READY TO COOK

Open 'til 9 p.m. TUES., WED. & FRIDAY

**Chickens** ROASTING 4 1/2 TO 6 LBS. READY-TO-COOK **45¢**

**Ducklings** PLUMP-4 TO 5 LBS. READY-TO-COOK **45¢**

**Capons** GENUINE 5 TO 7 LBS. READY-TO-COOK **69¢**

**Pork Loins** WHOLE **53¢**  
FULL RIB HALF **49¢** FULL LOIN HALF **59¢**

**EMPEROR GRAPES** Calif Red Sweet 2 LBS. **29¢**

**PEARS** BOSCH or ANJOU 4 LBS. **49¢**

**PASCAL CELERY** EXTRA LARGE BUNCH **19¢**

**MUSHROOMS** LB. **49¢**

**PITTED DATES** 2 LBS. **49¢**

**BUTTER** SILVERBROOK FRESH CREAMERY 1 LB. PRINT **68¢**

**MEDIUM EGGS** SUNNIBROOK ALWAYS STRICTLY FRESH DOZ. **51¢**

**CHED-O-BIT** FOR EVERY CHEESE USE 2 LB. LOAF **79¢**

**TOMATO SOUP** ANN PAGE 4 10 1/2 OZ. CANS **41¢**

**INSTANT COFFEE** A&P 6-oz. JAR **39¢**

**EVAP. MILK** WHITE HOUSE 6 TALL CANS **79¢**

**Gelatin Dessert** SPARKLE 4 PKGS. **25¢**

**Ann Page Mayonnaise** 4 OZ. **59¢**

**Bread Crumbs** JANE PARKER PKG. **19¢**

**Ann Page Ground Sage** PKG. **15¢**

**Poultry Seasoning** HELLS 2 PKGS. **25¢**

**Plum or Fig Pudding** CROSBY & BLACKWELL 4 OZ. **49¢**

**Ice Cream Toppings** ANN PAGE 2 3 1/2 OZ. PKGS. **33¢**

**Scots** FAMILY Napkins 2 PKGS. **27¢**

**Cranberry Juice** ANN PAGE 4 12 OZ. CANS **23¢**

**B&M Frozen Squash** 4 12 OZ. PKGS. **49¢**

**Rippled Chips** ANN PAGE 2 12 OZ. PKGS. **23¢**

**Christmas Cards** 100 YOUNG BOYS ASSN. OF SOX. **89¢**

**Slim Cards** CHRISTMAS BOX OF 25. **59¢**

**Baby Bath Dolls** ANN PAGE 16" REG. \$4.99. **3.19**

**Zorro Target Game** ANN PAGE 11 1/2" X 11 1/2" **1.59**

**Popeye Pull Toy** ANN PAGE 8 1/2" X 8 1/2" **89¢**

**GIANT A&P Value!**  
BIG 9-INCH FAMILY SIZE—2 LBS. 1 OZ!  
**APPLE PIE** Reg. 69¢ **59¢** Each

**CHIFFON CAKE** ORANGE JANE PARKER REG. 59¢ NOW **49¢**

**FRUIT CAKE** Jane Parker Light-3 lb. **2.69** 1 1/2 lb. CAKE **1.39**

**POTATO CHIPS** JANE PARKER 12 OZ. BOX **49¢**

**TWIN ROLLS** HEAT'N SERVE REG. 29¢ PKG. **23¢**

**PUMPKIN or SQUASH PIES** Jane Parker Family Size **69¢**

**HEINZ SOUPS** Chicken or Cream of Mushroom 2 11 1/2 OZ. CANS **35¢**

**HEINZ KETCHUP** JUST A DASH WORKS FLAVOR-BRACES 14 1/2 OZ. **25¢**

**HEINZ SWEET MIXED PICKLES** 7 1/2 OZ. **29¢**

**HEINZ BABY FOODS** Junior 2 JARS **29¢**  
Strained 4 JARS **41¢**

**SNOWS** CLARI CHOWDER 2 12 OZ. CANS **49¢**

**SNOWS** MINCED CLAMS 7 1/2 OZ. **25¢**

**Richardson's & Robbins** BONED CHICKEN 4 OZ. **69¢**

**R&R CHICKEN BROTH** 2 12 OZ. CANS **31¢**

### Weekend Deaths

By THE ASSOCIATED PRESS  
Butler, Pa. (AP)—Edward J. Hinkley, 52, died Saturday of a heart ailment. He was born in New York and had been in Butler for 20 years.

Butler, Pa. (AP)—George G. Murray, 52, died Saturday of a heart ailment. He was born in New York and had been in Butler for 20 years.

Butler, Pa. (AP)—Mason C. Hill, 70, died Saturday of a heart ailment. He was born in New York and had been in Butler for 20 years.

### Educational Club Meets Tomorrow

The Educational Club of Manchester will hold its 22nd regular meeting tomorrow at 8 p.m. in the auditorium of Nathan Hale School.

The 49-year-old club conducts activities for the welfare of children of Manchester. Six of these are brought to the attention of the club: mental hygiene and social work.

Those important in making this help possible are: Mrs. E. J. Hill, 59 Tanager St.; Mrs. E. J. Hill, 59 Tanager St.; Mrs. E. J. Hill, 59 Tanager St.

### Prescriptions Free Delivery

**LIGGETT DRUG SHOPPING PARADISE**

fresh tasty **BAKERY TREATS**

Cakes and pastries with that home-made flavor and so soft and fresh goodness. Make an occasion really special with our superior baked goods!

### Genuine Tenderloin

Philadelphian, Nov. 24 (AP)—The tenderloin of the Philadelphia Phillies is expected to be a success.

After a hard week with the highest and lowest bidders, the tenderloin of the Philadelphia Phillies is expected to be a success.

**20¢** READY-TO-EAT HAM SLICES

**20¢** 3 PACKAGES BIRDS EYE FISH STICKS

**15¢** 1 LB. PACKAGE SKINLESS FRANKS

**15¢** ROESSLER'S Kielbasa or Liverwurst

**25¢** 50 Lbs. U.S. No. 1 Winter Keeping Potatoes

**20¢** 1/2 Gal. of Hood's DRAE BURN ICE CREAM

**25¢** A TOP NOTCH BAKERY SPECIAL

**Greylegde Farms NATIVE TURKEYS**

ALL SIZES

Drying clothes is easy today... so's home heating our way!

You get premium quality Mobilheat with RT-50... the most completely effective hot oil additive in use today. And you get premium service. Automatic delivery. No advance payment plan and many other extras designed to make home heating really easy.

**Mobilheat**

**MORIARTY BROTHERS**

MI 3-5135 301-315 Center St.

**Native CAPONS** **Idlewild CORNISH HENS**

**Long Island DUCKLINGS** **Stahl Meyer CANNED HAMS**

**L.T. WOOD** **LOCKER PLANT MEAT MARKET**

51 BISSELL ST. TEL. MI 3-8424

PLENTY OF FREE PARKING SPACE

**2** Rock Turnips

**2** Butternut

**2** Hubbard

**2** Squash

**25¢** 50 Lbs. U.S. No. 1 Winter Keeping Potatoes

**20¢** 1/2 Gal. of Hood's DRAE BURN ICE CREAM

**25¢** A TOP NOTCH BAKERY SPECIAL

**FRESHER-BY-FAR**

**2** Rock Turnips

**2** Butternut

**2** Hubbard

**2** Squash

**25¢** 50 Lbs. U.S. No. 1 Winter Keeping Potatoes

**20¢** 1/2 Gal. of Hood's DRAE BURN ICE CREAM

**25¢** A TOP NOTCH BAKERY SPECIAL

**Fabric Formula Washing**

**NORGE Dispensomat**

**25¢ a day**

**WASHDAY WONDER PRODUCTS** DISPENSED AUTOMATICALLY! Exclusive Dispensomat adds detergent, bleach, water conditioner and fabric softener... all at proper time... all automatically.

**FABRIC FORMULA WASHING** Fabric Guide indicates proper wash speeds, spin speeds, time cycles, and water temperatures to meet special demands of every load.

• Special 2-Speed Agitator

• Automatic lint removal

• Round-The-Clock Timer

• 5-Year Warranty on Transmission Components

**See it Demonstrated Today!**

**THE Appliance BARN**

342 ADAMS ST. TEL. MI 3-8966

**HORMAN BENIZ, Proprietor**

OPEN UNTIL 9 P.M. MON. thru FRI.—SAT. UNTIL 8 P.M.

**AP Super Markets**

DEPENDABLE FOOD RETAILERS SINCE 1859

**Stock-up NOW for the Holiday!**

**YUKON CLUB BEVERAGES** Ginger Ale and A&P Flavors—Conts. Only **2 QUART 29¢**



### Union Walkouts Shut Second Major Airline

(Continued from Page One)

Union also is in dispute with Eastern Airlines which is supported by unions representing some 7,000 other employees. Eastern began preparing for a complete shutdown of its operations in particular, the strike at Eastern hit the heavy seasonal migration of winter vacationers to Florida. The engineers object to an airline demand that they take part in training. Wages and working conditions also were in dispute. The IWA strike, which ended after 12,000 employees headed the 6,700 striking members of the International Association of Machinists was the subject of a special government mediation effort.

The Federal Mediation and Conciliation Service sent one of its top negotiators to the airlines to settle the disputes. The airlines also refused to accept a 41-cent an hour increase over their 1957 contract. The IWA also refused to accept a 41-cent an hour increase over their 1957 contract. The IWA also refused to accept a 41-cent an hour increase over their 1957 contract.

### Paris Company Gets Control of Watermen Pen

(Continued from Page One)

The parent company of the Waterman Pen Co. Ltd. of Canada, retains 40 per cent of the stock in the new firm. The stock transfer took place last week while Rich was in this country. Previously the French government approved the transfer of a \$1 million to this country for the purchase of the pen.

### Obituary

**Robert J. Trevelick**  
South Windsor, Robert J. Trevelick, 58, of Governors Highway, died yesterday of his home. He was born in Canada, Aug. 21, 1900, and had lived in South Windsor for the past six years. He leaves his wife, Mrs. Marie Trevelick, and three sons, Roger C., Gilbert J. and John H. Trevelick, all of Springfield, Mass. Five daughters, Mrs. Thomas LaFollette of St. Johnsbury, Vt.; Mrs. Robert M. Namara of Colchester, Mrs. Joseph J. Williams of Worcester, Mass.; Miss Patricia A. Trevelick and Miss Joan H. Trevelick, both of South Windsor, also are survivors. Mr. Trevelick was a member of the St. Vincent de Paul Society and the Holy Family Club. He was a member of the St. Vincent de Paul Society and the Holy Family Club. He was a member of the St. Vincent de Paul Society and the Holy Family Club.

### Red Cross Chapter Pressed for Funds

The Manchester chapter of the American Red Cross is hard pressed for funds and will have to rely on assistance from the national organization to keep operating for the last three months of its fiscal year, which ends June 30.

### Court Fines One Youth in Gang Fight

Eight teenagers arrested as a result of a short-lived gang fight Nov. 14 faced court this morning. One of the youths was fined, two were put on probation, three received conditional discharge and two were committed to the State's Reformatory for Boys.

### Police Chief Hopefuls Take Oral Test Dec. 3

A technical oral examination for the position of Manchester chief of police will be held starting about 9:30 a.m. Dec. 3 in the hearing room of the Municipal Building.

### Special Service Of Thanksgiving Held at Church

Thanksgiving and praise were expressed last evening by means of a rhythmic interpretation, by song, by prayer, and by presentation of tangible gifts at a special thanksgiving service in the sanctuary of Center Congregational Church.

### Man Hurled in Accident

Allen Parrish, 35, of 44 Woodwood Dr., was one of three men injured in an accident on the Wilbur Cross Highway Saturday at 20:15 a.m.

### Police Arrests

Ronald Doyon, 37, of Williams St. has been arrested and charged with speeding. He will appear in court Saturday.

### Public Hearing Set Tonight On Sewer Issue

A public hearing will be held at 8 o'clock tonight at the Veterans School on a proposed sanitary sewer project for the west end of town.

### About Town

The Junior Daughters of Isabel will meet at 2 o'clock tonight at the home of Mrs. J. J. Hennessey, 251 Oakland St., in a social gathering.

### Funerals

Funeral services for William Robert were held this morning at 8:15 at the Walter E. Hennessey Funeral Home followed by a solemn requiem Mass at St. Hubert's Church at 9 o'clock. The Rev. Philip J. Hennessey officiated.

### Public Hearing Set Tonight On Sewer Issue

A public hearing will be held at 8 o'clock tonight at the Veterans School on a proposed sanitary sewer project for the west end of town. The project, which will cost \$100,000, includes a pump station to be built on W. Middle. The east of the Brookman River, and a force main connecting the station to the sewage treatment plant off West St.

### Police Arrests

Ronald Doyon, 37, of Williams St. has been arrested and charged with speeding. He will appear in court Saturday.

### Man Hurled in Accident

Allen Parrish, 35, of 44 Woodwood Dr., was one of three men injured in an accident on the Wilbur Cross Highway Saturday at 20:15 a.m.

### Police Arrests

Ronald Doyon, 37, of Williams St. has been arrested and charged with speeding. He will appear in court Saturday.

### Public Hearing Set Tonight On Sewer Issue

A public hearing will be held at 8 o'clock tonight at the Veterans School on a proposed sanitary sewer project for the west end of town.

### About Town

The Junior Daughters of Isabel will meet at 2 o'clock tonight at the home of Mrs. J. J. Hennessey, 251 Oakland St., in a social gathering.

### Funerals

Funeral services for William Robert were held this morning at 8:15 at the Walter E. Hennessey Funeral Home followed by a solemn requiem Mass at St. Hubert's Church at 9 o'clock. The Rev. Philip J. Hennessey officiated.

## LYNN POULTRY FARMS

"Our Very Own State of Connecticut Fresh Poultry From Farm to You"

Open Tues. and Wed. 9 P.M. - Saturday 8 A.M. to 6 P.M. - MI 9-8251

**Poultry Parts -- To Broil or Fry**  
**BREASTS lb 69¢ LEGS lb 59¢**

★ Fresh Native or Frozen Native ★  
 ALL SIZES -- OVEN READY

**TURKEYS CAPONETTES**  
**CAPONS FOWL FRYERS**  
**DUCKS**

"TASTE and COMPARE" -- GUARANTEED TO SATISFY"

## SO WORTH WAITING FOR!

Now that you've seen the flashy show of lesser cars, come in today, and inspect the fine cars that quietly understate your own good taste. The magnificent new Lincoln and Continental Mark IV are on display now!



Today, forget every motorcar you've ever owned and take a long, long look at Lincoln. Here is timeless beauty struck into metal and glass. The lines are lean and lustrous, the interiors unbelievably luxurious, and certainly the largest of any car this year. The sure and lasting response of the engine, the incredible handling ease, just the joy of owning a Lincoln are all good reasons for wishing to make it yours. But, practically, as well, its sleek beauty and remarkable sturdiness make it your wisest, fine car investment. The Continental Mark IV is, of course, beyond words. See them both now in our showrooms.

**LINCOLN for '59 • CONTINENTAL MARK IV**  
*Classic beauty...unexcelled craftsmanship*

**MORIARTY BROTHERS, Inc.**  
 301-315 CENTER STREET MANCHESTER, CONN.

## BOY SCOUT Notes and News

The monthly pack meeting of Cub Scout Pack No. 27, St. Mary's Church, was held Friday evening at the church hall.

Richard Smith conducted the opening ceremony and Den 1 Cubes presented a show entitled "Musical Puppets".

Advancements were given by Chairman Stanley Cross to the following: Robert Jack to Collin Judd, Bobby Krone, Russell Pratt, Henry Levy; Wolf badge to Bobby Bowen, Raymond Ford, David Madden, Rudy Artcher, Donald Denley, Raymond London, David Strimatis, Edward Strimatis, Clifford Deane; Bear badge to Freddie Joy; One Golden Arrow to Tommy Ford, Raymond London and Edward Strimatis.

Paul Bernard, scout institutional representative addressed the group. He emphasized the importance of awards in scouting and how they better prepare the boy for their advancement to scouting.

An outline of future activities for Pack 27, was given by Den 1 Chairman, committee chairman, Bobby Bowen, and Scoutmaster, Clifford Deane.

The next pack meeting will be held Dec. 19, at 7:30 in the church hall.

Rural school teachers are paid about one-third less than teachers of city children, reports the Twentieth Century Fund.

## SHRIMP

FANCY 89¢  
 MEDIUM 89¢  
 FAVORITE 89¢  
 SALADS & COCKTAILS

**Thanksgiving Specials**  
**FRESHPAK Cranberry Sauce**  
 2 16-oz. cans 33¢

**ROYAL PRINCE GOLDEN YAMS** 2 16-oz. cans 49¢  
**DOLE FRUIT COCKTAIL** 30-oz. can 40¢  
**STOKELY HONEY POPS GREEN PEAS** 2 17-oz. cans 31¢  
**KITCHEN GARDEN FROZEN SUICED STRAWBERRIES** 2 10-oz. pkgs. 35¢

**NANCY LYNN PUMPKIN PIE** 59¢  
**NANCY LYNN MINCE PIE** 55¢  
**FOR CANAPES and DESSERT SHARP CHeddar** 59¢  
**GRAND UNION TOMATO JUICE** 25¢  
**WIDE TOPS 3 1/2 25¢ TUNA** STARBUCK'S 6-oz. can 35¢  
 Light Chunk

**Window Shades**  
 Made to Order  
 ALSO VENETIAN BLINDS  
 Bring your old rollers in and have 'em per shade.

**E. A. JOHNSON PAINT CO.**  
 723 Main Street  
 Phone MI 6-4501

## STUFFED TURKEYS

All Ready to Cook!

**59¢** 12 lbs. to 16 lbs. average

**STUFFED DUCKS** HILAND FARMS 57¢  
**STUFFED CAPON** HILAND FARMS 79¢  
**ROASTING CHICKENS** HILAND FARMS 59¢

**All the Finest**  
 FRESHLY SHUCKED--FOR STUFFING

**Oysters** STANDARD HALF PINT 55¢  
 GRAND UNION 18-oz. can 25¢  
**Sweet Potatoes** SUPERFINE 16-oz. can 25¢  
**Boiled Onions** 2 29-oz. cans 37¢  
**Mince Meat** CROSSE & BLACKWELL 28-oz. can 55¢  
**Fruits & Peels** DROMEDARY MIXED 4-oz. jar 23¢  
**Puddings** CROSSE & BLACKWELL FIG, DATE, PLUM 16-oz. can 49¢  
**Hard Sauce** CROSSE & BLACKWELL 6-oz. jar 49¢  
**Stuffed Olives** FRESHPAK 8-oz. jar 45¢  
**Penguin Sodas** plus deposit 2 29-oz. btl. 29¢  
**Stuffing Mix** BOND 8-oz. pkg. 28¢  
**Asparagus** GREEN GIANT 19-oz. can 47¢  
**Sweet Cider** FRESHLY MADE gal. 69¢

**Fresh Holiday Produce**  
 Large Juicy California  
**Emperor Grapes**  
 2 lbs. 29¢

**NUTRITIOUS--GOLDEN**  
**SWEET POTATOES** 3 lb. 25¢  
**RED RICE** 1 lb. 19¢  
**FRESH CRANBERRIES** 1 lb. 19¢  
 BOILING SIZE  
**WHITE ONIONS** 2 lb. 29¢  
 LARGE SIZE  
**DIAMOND WALNUTS** 1 lb. 45¢  
 IMPORTED  
**PITTED DATES** 1 lb. 39¢  
**FINGER FIGS** 6-oz. pkg. 25¢  
**DELICIOUS DATE & NUT ROLL** 6-oz. pkg. 29¢  
**NUTRITIOUS FRESH DATES** 1 lb. 39¢  
**BURRY** FAMILY ASSORTMENT 14-oz. pkg. 39¢

**Grand Union SUPERMARKETS**  
 for free Christmas gifts!

Prices affected at Upper Connecticut Street Mon., Nov. 24th thru Sat., Nov. 29. We Reserve the Right to Limit Quantities.

Manchester Shopping Parkade, Middle Turnpike W. and Broad St., Manchester--Open Monday, Tuesday, 10 A.M. to 6 P.M.--Wednesday, Thursday, Friday, 9 A.M. to 9 P.M.--Saturday, 9 A.M. to 6 P.M.  
 TRIPLE-S BRAND REFRIGERATOR CROCKERS--51 ASTOR ST., HARTFORD



### De Gaulle Wins Vote Of France

(Continued from Page One)

During the next week the rival candidates will be plying their wits against the French electorate in a series of public hearings scheduled for tonight and tomorrow night.

As an example, De Gaulle got some 8,000 votes less than the combined total of his opponents in the first round of the election.

De Gaulle's victory was a surprise to many observers who had expected a narrow margin of victory for the former premier.

### Hospital Notes

Patients Today: 108. Admitted Saturday: Mrs. Elizabeth De Martin, 831 1/2 Vermont St., Hartford, Conn.; Mrs. Joseph J. De, 201 Hartford St., Hartford, Conn.; Mrs. Sharon Simpson, 21 Bates Rd., East Windsor, Conn.; Mrs. Katherine Russell, 450 North Main St., East Windsor, Conn.; Mrs. Mary Ann, 40 Russell St., Hartford, Conn.; Mrs. John J. De, 144 Garden St., Hartford, Conn.; Mrs. Ora De, 228 Woodbridge St., East Windsor, Conn.

### Public Works Study to End In 3 Weeks

(Continued from Page One)

Town Director Ted Cummings reported today that the Board of Directors' public works subcommittee will have met with all local officials by Dec. 2 to get ideas on a public works setup for Manchester.

The group will meet with Town Engineer James Sheehey, Cummings said, on Friday or Saturday. An part of its consultation with Cummings, subcommittee chairman, and his group will meet with General Manager Richard Martin tonight, tomorrow night or Wednesday, depending on the time public hearings are held for tonight and tomorrow night.

Next week, the subcommittee will meet with Town Engineer James Sheehey, Cummings said, on Friday or Saturday. An part of its consultation with Cummings, subcommittee chairman, and his group will meet with General Manager Richard Martin tonight, tomorrow night or Wednesday, depending on the time public hearings are held for tonight and tomorrow night.

### Court Cases

The case against Thomas M. McCrystal, 19 of Vernon, was continued to Jan. 5 by Deputy Judge John A. Karp to allow McCrystal to seek medical aid at the North Main St. hospital. McCrystal arrested Oct. 10 on charges of assault on a woman without the owner's permission. Prosecutor John R. Fitzgerald and investigation of McCrystal's case had gone to the state's attorney. McCrystal's attorney, Attorney Robert E. Keenan, said McCrystal would try to have McCrystal committed to the state hospital.

### Rockville-Vernon New Zealander Picked As Head of Chamber

(Continued from Page One)

George R. Bennett, 47, of Haven, Mont., formerly of New Zealand, has been chosen from about 16 applicants to replace Vincent C. Grylls as executive secretary of the Rockville Area Chamber of Commerce.

Bennett was chosen from among seven applicants interviewed at a meeting of the local Chamber board of directors Saturday afternoon. He is a native of New Zealand and has been in this country since 1945 when he was employed by the New Zealand government to do postwar research in tobacco and hops growing and pasturage at the University of Kentucky and the University of Maryland.

He started in Chamber of Commerce work in 1952 when he accepted a position as manager of the Haven, Mont., Chamber. Membership at that time totaled 10 and has risen to 400 under his leadership. He assisted in the reorganization of the Chamber and put up an industrial promotion which resulted in the opening of several industrial warehouses. The group will move its headquarters to the full Board of directors.

### Upside-Down View

Ornithologist John G. Glen said his grandchildren charged him with a smile with one exception. "Granddaddy, if you were standing on your head today, you'd have both eyes on the same side."

### British Labor Pledges Fight On Cold War

(Continued from Page One)

London, Nov. 23. (AP)—The British Labor party today pledged to continue its fight against the "cold war" between the United States and the Soviet Union.

The party's foreign secretary, George Bernard Shaw, said the party would continue to work for a peaceful settlement of the world's problems and would not support any military alliance.

Shaw said the party would continue to work for a peaceful settlement of the world's problems and would not support any military alliance. He said the party would continue to work for a peaceful settlement of the world's problems and would not support any military alliance.

### Holiday TURKEYS

When nothing but the best will do, people for 34 years have been looking to Bursack's. This year, as always, we're featuring the finest selection of holiday turkeys. There's complete satisfaction in every slice! Even our frozen turkeys are all FRESH! Nothing that has been kicking around in the freezer for months. BE SURE OF SATISFACTION... BE SURE WITH BURSACK'S.

### AP Liquor Stores

(Continued from Page One)

Fine Wines and Liquors for the Holidays. Shop Early, Closed All Day Thursday, November 27, 1958.

WINE COAST TO COAST. CALIFORNIA SWEET WINE. Port, Sherry, Muscatel, White Port, Pale Dry Sherry. 1/2 GAL 1.67 GALLON 3.15.

LEFRANC WINES. Ruby Port, Tawny Port, Muscatel, Cream Sherry, Club Dry Sherry. BOTTLED IN CALIFORNIA A SCHOOLMAKER SELECTION 5TH BOT 1.25.

N. Y. S. WINES. Tawny Port, Ruby Port, Dry Sherry, Muscatel, Sherry. BOTTLED IN NEW YORK STATE 5TH BOT 99¢.

LEFRANC TABLE WINES. Dry Sauterne, Burgundy, Rhine, Claret, Chablis-Vin Rose. BOTTLED IN CALIFORNIA A SCHOOLMAKER SELECTION 5TH BOT 1.05.

CHAMPAGNE. Const to Coast. New York State 2.95. Pol Morlay imported from France 3.99.

SCOTCH. Glen Crinan 4.19. Dunwoodie 4.19. Penrose 4.19. IMPORTED FROM SCOTLAND - 86 PROOF.

WHISKIES. Briarcliff BLENDED WHISKY 86 PROOF - 4 OR MORE YEARS OLD - 1/2 gal 7.43. Old Harvey BLENDED WHISKY 86 PROOF - 4 OR MORE YEARS OLD - 1/2 gal 7.79. Lynnbrook BLENDED WHISKY 86 PROOF - 5, 6 AND 7 YEARS OLD - 1/2 gal 7.99. James Stewart 100 PROOF - KENTUCKY BONDED BOURBON 5TH BOT 3.99.

### PRESCRIPTIONS DAY OF NIGHT ARTHUR DRUG

(Continued from Page One)

LARGEST SELECTION PERSONALIZED CHRISTMAS CARDS. Over 40 Albums on Display. WILLTON'S GIFT SHOP. 484 MAIN ST. MI 9-4011.

Read Herald Advs.

AP Liquor Stores. Fine Wines and Liquors for the Holidays. Shop Early, Closed All Day Thursday, November 27, 1958.

WINE COAST TO COAST. CALIFORNIA SWEET WINE. Port, Sherry, Muscatel, White Port, Pale Dry Sherry. 1/2 GAL 1.67 GALLON 3.15.

LEFRANC WINES. Ruby Port, Tawny Port, Muscatel, Cream Sherry, Club Dry Sherry. BOTTLED IN CALIFORNIA A SCHOOLMAKER SELECTION 5TH BOT 1.25.

N. Y. S. WINES. Tawny Port, Ruby Port, Dry Sherry, Muscatel, Sherry. BOTTLED IN NEW YORK STATE 5TH BOT 99¢.

LEFRANC TABLE WINES. Dry Sauterne, Burgundy, Rhine, Claret, Chablis-Vin Rose. BOTTLED IN CALIFORNIA A SCHOOLMAKER SELECTION 5TH BOT 1.05.

CHAMPAGNE. Const to Coast. New York State 2.95. Pol Morlay imported from France 3.99.

### British Labor Pledges Fight On Cold War

(Continued from Page One)

London, Nov. 23. (AP)—The British Labor party today pledged to continue its fight against the "cold war" between the United States and the Soviet Union.

The party's foreign secretary, George Bernard Shaw, said the party would continue to work for a peaceful settlement of the world's problems and would not support any military alliance.

Shaw said the party would continue to work for a peaceful settlement of the world's problems and would not support any military alliance. He said the party would continue to work for a peaceful settlement of the world's problems and would not support any military alliance.

### Upside-Down View

Ornithologist John G. Glen said his grandchildren charged him with a smile with one exception. "Granddaddy, if you were standing on your head today, you'd have both eyes on the same side."

### Rockville-Vernon New Zealander Picked As Head of Chamber

(Continued from Page One)

George R. Bennett, 47, of Haven, Mont., formerly of New Zealand, has been chosen from about 16 applicants to replace Vincent C. Grylls as executive secretary of the Rockville Area Chamber of Commerce.

Bennett was chosen from among seven applicants interviewed at a meeting of the local Chamber board of directors Saturday afternoon. He is a native of New Zealand and has been in this country since 1945 when he was employed by the New Zealand government to do postwar research in tobacco and hops growing and pasturage at the University of Kentucky and the University of Maryland.

He started in Chamber of Commerce work in 1952 when he accepted a position as manager of the Haven, Mont., Chamber. Membership at that time totaled 10 and has risen to 400 under his leadership. He assisted in the reorganization of the Chamber and put up an industrial promotion which resulted in the opening of several industrial warehouses. The group will move its headquarters to the full Board of directors.

### Upside-Down View

Ornithologist John G. Glen said his grandchildren charged him with a smile with one exception. "Granddaddy, if you were standing on your head today, you'd have both eyes on the same side."

### British Labor Pledges Fight On Cold War

(Continued from Page One)

London, Nov. 23. (AP)—The British Labor party today pledged to continue its fight against the "cold war" between the United States and the Soviet Union.

The party's foreign secretary, George Bernard Shaw, said the party would continue to work for a peaceful settlement of the world's problems and would not support any military alliance.

Shaw said the party would continue to work for a peaceful settlement of the world's problems and would not support any military alliance. He said the party would continue to work for a peaceful settlement of the world's problems and would not support any military alliance.

### Upside-Down View

Ornithologist John G. Glen said his grandchildren charged him with a smile with one exception. "Granddaddy, if you were standing on your head today, you'd have both eyes on the same side."

# SECOND BIG WEEK OF SAVINGS AT THE NEW FIRST FOOD!



## GRAND OPENING SALE

### CONTINUED ALL THIS WEEK!

Tremendous Savings In Every Department For Your Holiday Feast Plus S&H Green Stamps

## SWIFT'S PREMIUM -- BUTTERBALL TURKEYS

PLUMP, TENDER--OVEN READY

Bell's Seasoning	Favorite Pkg.	13c
Stickney Stuffing	Tasty 2-Pkg.	29c
Sweet Life Dates	Pitted 8 Oz. Pkg.	19c
Diamond Walnuts	Baby Lb. Pkg.	45c
Fancy Mixed Nuts	Lady Graham Pkg.	45c
Heinz Sweet Pickles	Qt.	49c
Ripe Black Olives	Janus 18 Oz. Can	29c
Banquet Olives	Sweet Life 8 Oz. Jar	49c
Stuffed Olives	Glee Club 8 Oz. Jar	33c

### Frozen Holiday Treats

Pictsweet Peas	6 10 Oz. Pkg.	99c
Sweet Life Shrimp	Quick-Fix 7 Oz. Pkg.	79c
FARMHOUSE	Mince Or Apple Pies	Each 55c

SWEET LIFE CRANBERRY SAUCE	16 OZ. CANS	2 35c
SWEET LIFE FRUIT COCKTAIL	LARGE 28 OZ. CAN	39c
SWEET LIFE MINCE MEAT	25c	49c

TOMS 18 lbs. And Up	37c
HENS 8 to 16 lbs.	45c

# FIRST FOOD

STORE OF MANCHESTER, INC.

AMPLE PARKING AT FRONT, SIDE OR REAR OF BUILDING. OPEN TUESDAY AND WEDNESDAY TILL 9 P.M. - CLOSED THURSDAY.

118 EAST CENTER STREET, MANCHESTER

### For a HAPPY HOLIDAY

## Egg-Nog

From DART'S DAIRY

- RICH
- CREAMY
- DELICIOUS

Our Own Old Fashioned Recipe. Made with fresh cream, fresh spices. ORDER FROM YOUR ROUTE SALESMAN OR THE DAIRY.

## DART'S DAIRY

PHONE MI 3-6430

### THE FINEST BROAD-BREADED TURKEYS

TOMS 20 Lbs. and Over	39c
HENS 12 Lbs. and Over	45c

ALSO NATIVE, FRESH DRESSED TURKEYS. TOMS AT 46 LB. AND HENS AT 26 LB.

OUR OWN SAUSAGE MEAT 1/2 Lb. 59c

### FRUITS VEGETABLES

For your holiday table, choose from our selection of: Grapes (all kinds), Italian Chestnuts, Tangerines, Naval Oranges, Hubbard squash, Rutabagas, Turnips, White and Yellow globe Turnips, Mushrooms, Etc.

ROASTING CHICKENS	Lb.	49c
SAUSAGE MEAT	Lb.	59c
FRUITS VEGETABLES		
BUTTERNUT SQUASH	Lb.	5c
BALDWIN APPLES	3 Lbs.	39c

### SHURFINE CRANBERRY SAUCE

2 cans 39c

30-oz. CAN SHURFINE FRUIT COCKTAIL 39c

29-oz. CAN SHURFINE PUMPKIN 21c

16-oz. CANS SHURFINE CREAM STYLE CORN 7 cans \$1.00

BETTY CROCKER CAKE MIXES 3 pkgs. 89c

White, Devil's Food, Yellow, Honey Spice.

## BURSACK'S SUPER MARKET

87D. ROAD COR. MCKEE ST.—PHONE MI 3-8532

ALWAYS PLENTY OF FREE PARKING

OPEN TUESDAY AND WEDNESDAY EVENINGS

We Give our Customers Profit-Sharing Stamps

### TUDOR BEER AND ALE

PREMIUM QUALITY

6 12 OZ. CANS	85c
CASE OF 24 CANS	3.35

Many Other Popular Brands On Hand

118 EAST CENTER STREET, MANCHESTER



**BUGS BUNNY**

**BUGS' USED FURNITURE**

**BY V. I. HAMLIN**

**COMPANY HALT!**

**PRISCILLA'S POP**

**BY AL VERMILION**

**BOO HOO!**

**WHY DO YOU SEND YOUR PROPOSAL TO THE DEVELOPER COLUMN OF THE PAPER?**

**LONG SAM**

**BY AL CAPP and BOB LUBBERS**

**IF WE GET TO THAT THicket, LAUNCELOT, HE WON'T BE ABLE TO FOLLOW US WITH THAT BIG SHOOTING HORSE HE'S ON!**

**LUDD SAXON**

**BY KEN BALD and JERRY BRONFELD**

**HELLO, UNCLE JOHN, SO I'VE BEEN QUITE SUCCESSFUL SINCE YOU LEFT ME!**

**HUZ SAWYER**

**BY ROY CRANE**

**YOU SAY A WOMAN TRIED TO STAB YOU WITH A KNIFE? ASK ME WHERE IN ANY HOUSE IT WOULD BE!**

**MICKY FINN**

**BY LANK LEONARD**

**IF YOU KNOW THE ANSWERS TO THESE RIDDLES, GIVE ME A HAND!**

**MR. ABERNATHY**

**BY RALSTON JONES and FRANK RIDGEWAY**

**WHAT'S PAR FOR THIS COURSE, ABERNATHY?**

**THE STORY OF MARTHA WAYNE**

**BY WILSON SCRIBGGS**

**JOAN GET SOME SCISSORS SOON, WANDA CAN CUT LIKE WANDA!**

**OUR BOARDING HOUSE** with **MAJOR HOOPLE**

**WHAT'S UNDER YOUR COAT? THAT I COME TO VISIT YOU ON CHALKS OF A (DREAM!) IT'S A WEIRD AND WONDERFUL TALE!**

**CARNIVAL**

**BY DICK TURNER**

**THAT ROSEMARY HIGGS IS PLAYING HARD-TO-GET. EVERY TIME I CALL HER FOR A DATE SHE SAYS SHE'S BROKE!**

**LITTLE SPORT**

**BY ROUSON**

**YOU LOOK TERRIBLE! WHY DON'T YOU GO BACK TO BED?**

**R. C.**

**BY JOHNNY HART**

**HERE DOGGIE!**

**MOITY MEKLE**

**BY DICK CAVALLI**

**CRUNCH!**

**CAPTAIN EASY**

**BY LESLIE TURNER**

**AFTER CALLING MOST OF THE CLUBS IN THE CITY...**

**JEFF COBB**

**BY PETE HOFFMAN**

**AM I BEING RIGHT BY JEFF COBB STOPPING A BULLY'S ABUSE OF UPPOWERS ONLY FOR HIMSELF?**

**DAILY CROSSWORD PUZZLE**

**Wringing Wet**

**ACROSS**

- Morning moisture
- Large bodies of water
- Action word
- 12 letters
- On the water
- Chorus
- 18 letters
- 19 letters
- 20 letters
- 21 letters
- 22 letters
- 23 letters
- 24 letters
- 25 letters
- 26 letters
- 27 letters
- 28 letters
- 29 letters
- 30 letters
- 31 letters
- 32 letters
- 33 letters
- 34 letters
- 35 letters
- 36 letters
- 37 letters
- 38 letters
- 39 letters
- 40 letters
- 41 letters
- 42 letters
- 43 letters
- 44 letters
- 45 letters
- 46 letters
- 47 letters
- 48 letters
- 49 letters
- 50 letters

**DOWN**

- 1 letter
- 2 letters
- 3 letters
- 4 letters
- 5 letters
- 6 letters
- 7 letters
- 8 letters
- 9 letters
- 10 letters
- 11 letters
- 12 letters
- 13 letters
- 14 letters
- 15 letters
- 16 letters
- 17 letters
- 18 letters
- 19 letters
- 20 letters
- 21 letters
- 22 letters
- 23 letters
- 24 letters
- 25 letters
- 26 letters
- 27 letters
- 28 letters
- 29 letters
- 30 letters
- 31 letters
- 32 letters
- 33 letters
- 34 letters
- 35 letters
- 36 letters
- 37 letters
- 38 letters
- 39 letters
- 40 letters
- 41 letters
- 42 letters
- 43 letters
- 44 letters
- 45 letters
- 46 letters
- 47 letters
- 48 letters
- 49 letters
- 50 letters

**The Baby Has Been Named...**

**Douglas Anthony**, son of Mr. and Mrs. John Fuller, 286 Highland St. He was born Nov. 14 at Manchester Memorial Hospital. His maternal grandparents are Mr. and Mrs. Clarence LaChapelle, Phoenix St., Vernon, and his paternal grandparents are Mr. and Mrs. Clayton Fuller, Charter Oak St. He has a brother, John Jr., 2; and two sisters, Debbie, 3, and Janie, 14 months.

**Mark Raymond**, son of Mr. and Mrs. Allen C. Kroh, 119 Maple St. He was born Nov. 18 at Manchester Memorial Hospital. His maternal grandparents are Mr. and Mrs. Charles Kook, 73 Church St. He has a brother, Allen Charles Jr., 9; and a sister, Diane Elizabeth, 11.

**Paul John**, son of Mr. and Mrs. Henry Kaminski, 235 School St. He was born Nov. 15 at Manchester Memorial Hospital. His maternal grandparents are Mr. and Mrs. Joseph Vaccaro, 217 School St., and his paternal grandparents are Mr. and Mrs. Frank Wisniewski, 88 Village St., Rockville. He has a brother, James, and two sisters, Janice and Linda.

**Donald William**, son of Mr. and Mrs. William R. Lanni, 30 Hyde St. He was born Nov. 15 at Manchester Memorial Hospital. His maternal grandparents are Mr. and Mrs. Francis Gardner, 30 Hyde St. He has a sister, Cathy Sue, 17 months.

**David Ralph**, son of Mr. and Mrs. Ralph E. Corban Jr., 94 Dixon Dr. He was born Nov. 16 at Manchester Memorial Hospital. His maternal grandparents are Mr. and Mrs. E. C. Chochoy, Hamden, and his paternal grandparents are Mr. and Mrs. Ralph E. Corban, Gladstone. He has a sister, Susan Laura, 3.

**Paula Joan**, daughter of Mr. and Mrs. Paul J. Brookman, 17 McCann Dr. She was born Nov. 16 at Manchester Memorial Hospital. Her maternal grandparents are Mr. and Mrs. Andrew Donza, 18 Dudley St., and her paternal grandparents are Mr. Ann Brookman, West Brentwood, L. I., N. Y. She has two brothers, Steven, 6, and Gary, 2.

**Wayne Allan**, son of Mr. and Mrs. Thomas L. Johnson, Center Rd., Vernon. He was born Nov. 13 at Manchester Memorial Hospital. His maternal grandmother is Mrs. Gertrude M. Davey, Hartford Rd., and his paternal grandparents are Mr. and Mrs. Matt De Sio, Fort Lauderdale, Fla. He has two brothers, Thomas, 11, and Victor, 6.

**Stephen Gerard**, son of Mr. and Mrs. Arthur J. Fogarty, 218 Oak St. He was born Nov. 14 at Manchester Memorial Hospital. His maternal grandmother is Mrs. Frances E. Pike, 67 E. Middle St., and his paternal grandparents are Mr. and Mrs. Stephen Fogarty, 28 Grosvenor St. He has a brother, Arthur John Jr., 11; and two sisters, Elizabeth Ann, 15, and Mary Frances, 15.

**Richard W. Hill**, son of Mr. and Mrs. Richard W. Post Jr., 105 Deming St. He was born Nov. 17 at Manchester Memorial Hospital. His maternal grandparents are Mr. and Mrs. Joseph Forucci, Hartford, and his paternal grandparents are Mr. and Mrs. Richard W. Post Sr., 147 Boston St.

**Jayne Leslie**, daughter of Mr. and Mrs. John P. McCallum, 60 Foster St. She was born Nov. 16 at Manchester Memorial Hospital. Her maternal grandparents are Mr. and Mrs. Carl S. Davolin, Providence, R. I., and her paternal grandparents are the Rev. and Mrs. John P. McCallum, Avon, Mass. She has two sisters, Marjorie, 10, Sandra, 8, Marcia, 8, Jill, 4, and Joanne, 15 months.

**Vickie Denise**, daughter of Mr. and Mrs. Diane R. Follansbee, Ashmead Dr., Coventry. She was born Nov. 15 at Manchester Memorial Hospital. Her maternal grandparents are Mr. and Mrs. Alexander LaCour, Hartford, and her paternal grandparents are Mr. and Mrs. Percy Follansbee, Coventry. She has two brothers, Ricky, 4, and Michael, 2, and a sister, Nickie, 14 months.

**Scott Tracy**, son of Mr. and Mrs. William Sweet, 158 Prospect St., Rockville. He was born Nov. 16 at Manchester Memorial Hospital. His maternal grandparents are Mr. and Mrs. Walter J. Klein, 152 Brantford St., and his paternal grandparents are Mr. and Mrs. Albert F. Sweet, Johnson Ave., East Hartford.

**Barbara Jean**, daughter of Mr. and Mrs. Everett W. Hubert Jr., Marlborough. She was born Nov. 15 at Manchester Memorial Hospital. Her maternal grandmother is Mrs. Russell Siskowick, Buffalo, N. Y., and her paternal grandparents are Mr. and Mrs. Everett W. Hubert, Cincinnati, Ohio. She has a brother, Michael James, 14 months.

**Holly Ann**, daughter of Mr. and Mrs. Charles Parakkias, Hazardsville. She was born Nov. 14 at Manchester Memorial Hospital. Her maternal grandparents are Mr. and Mrs. J. Arthur Holbeck, East Hartford, and her paternal grandparents are Mr. and Mrs. Milton Parakkias, Thompsonville.

**Larry Scott**, son of Mr. and Mrs. Malcolm Cooley, Maple St., Ellington. He was born Nov. 14 at Manchester Memorial Hospital. His maternal grandfather is William Loufington, Lebanon, and his paternal grandfather is Mrs. Harry Aborn Somers Rd., Ellington. He has a brother, Kenneth, 6, and two sisters, Ellen Marie, 8, and Laurie May, 7.

**Kenneth Martin**, son of Mr. and Mrs. John E. Grant, Storrs. He was born Nov. 16 at Manchester Memorial Hospital. His maternal grandmother is Mrs. Isabelle Takayan, Waterbury, Mass., and his paternal grandparents are Mr. and Mrs. Albert Grant, Amherst, Mass. He has a brother, Michael Eric, 14 months.

**Catherine Elizabeth**, daughter of Mr. and Mrs. George W. Savage Jr., 65 Ridge St. She was born Nov. 19 at Manchester Memorial Hospital. Her maternal grandparents are Mr. and Mrs. Lewis Wiley, 65 Ridge St., and her paternal grandparents are Mr. and Mrs. George Savage, Bridgeport.

**Scott Loren**, son of Mr. and Mrs. Carl Anderson Jr., 36 Margaret Rd. He was born Nov. 18 at Manchester Memorial Hospital. His maternal grandparents are Mr. and Mrs. Frank Schaub, 105 Highland St., and his paternal grandparents are Mr. and Mrs. Carl Anderson Sr., 55 Birch St. He has a sister, Cheryl Sue, 19 months.

**James Michael**, son of Mr. and Mrs. Clarence W. Finley, 70 Whitney Rd. He was born Nov. 18 at Manchester Memorial Hospital. His maternal grandparents are Mr. and Mrs. Francis Piro, South Rd., Bolton, and his paternal grandparents are Mr. and Mrs. Clarence W. Finley Sr., 20 White St., Rockville. He has a brother, Raymond James, 8; and a sister, Elizabeth Ann, 9.

**David Paul**, son of Mr. and Mrs. Stephen Bellinghri, 103 Grand Ave., Rockville. He was born Nov. 16 at Manchester Memorial Hospital. His maternal grandmother is Mrs. Yarneswey, 103 Grand Ave., Rockville, and his paternal grandparents are Mr. and Mrs. Salvatore Bellinghri, 293 Spruce St. He has a sister, Maryann, 14 months.

**James Robert**, son of Mr. and Mrs. Robert W. Zent, 62 Devon Dr. He was born Nov. 18 at Manchester Memorial Hospital. His maternal grandparents are Mr. and Mrs. Kenneth Haddam, East Hartford, and his paternal grandparents are Mr. Josephine Z. Sawawicz, East Hartford. He has a brother, Richard W., 7; and a sister, Linda J., 3.

**Lori Minklin**, daughter of Mr. and Mrs. William C. Dobson, Lewis Dr., Wapping. She was born Nov. 20 at Manchester Memorial Hospital. Her maternal grandparents are Mr. and Mrs. James M. Borkin, Middle Haddam, and her paternal grandparents are Mrs. William K. Dobson, Matersville, and Mr. and Mrs. Dana Louise, 2.

**Scott David**, son of Mr. and Mrs. Richmond W. Morrison, 18 Newman St. He was born Nov. 19 at Manchester Memorial Hospital. His maternal grandparents are Mr. and Mrs. Albert J. Todd, 379 Porter St., and his paternal grandparents are Mr. and Mrs. William J. Morrison, 247 Summit St. He has two sisters, Wendy Todd, 4; and Kimberly Sue, 1.

**Kimberly Ann**, daughter of Mr. and Mrs. Chester H. Small, Taftville. She was born Nov. 20 at Manchester Memorial Hospital. Her maternal grandparents are Mr. and Mrs. Albert J. Roy, 444 Main St., Rockville, and his paternal grandparents are Mr. and Mrs. Charles Ullmar, 46 Norman St., and his paternal grandmother is Mrs. Mary Gabbard, 149 S. Main St., Rockville. He has a sister, Nancy Anne, 2 1/2.

**Steven Craig**, son of Mr. and Mrs. Richard E. Neville, Market Hill, Wapping. He was born Nov. 19 at Manchester Memorial Hospital. His maternal grandparents are Mr. and Mrs. William S. Vella, Grand Rapids, Mich., and his paternal grandparents are Mr. and Mrs. Stanley E. Neville, Detroit, Mich. He has a brother, Richard E. Jr., 2 1/2.

**Open Tuesday and Wednesday Till 9 p. m.**

**Be Sure of 'THE VERY BEST' for your THANKSGIVING**

**Popular SUPER MARKETS**

**Insist On WAYBEST Grade A - Oven Ready TURKEYS**

Under 19 lbs. **45<sup>c</sup>** lb.

Over 19 lbs. **39<sup>c</sup>** lb.

**THE BEST TURKEY VALUE AT ANY PRICE.. Plus WORLD GREEN STAMPS**

**CHICKENS** WAYBEST NATIVE LARGE ROASTING OVEN-READY **49<sup>c</sup>** lb.

**DUCKLINGS** LONG ISLAND OVEN-READY **49<sup>c</sup>** lb.

**CORNED BEEF** BONELESS BRISKET U. S. TOP CHOICE (HEAD CUT) **59<sup>c</sup>** lb.

**GROUND BEEF** Fresh Lean **49<sup>c</sup>** lb.

**SAUSAGE MEAT** Pure Pork 1 Lb Roll **49<sup>c</sup>**

**SLICED BACON** Quality Layer **59<sup>c</sup>** lb.

**BUTTER** Country View Fresh Creamery **67<sup>c</sup>** lb.

**LOAF CHEESE** Each Slice Individually Wrapped **25<sup>c</sup>** pkg.

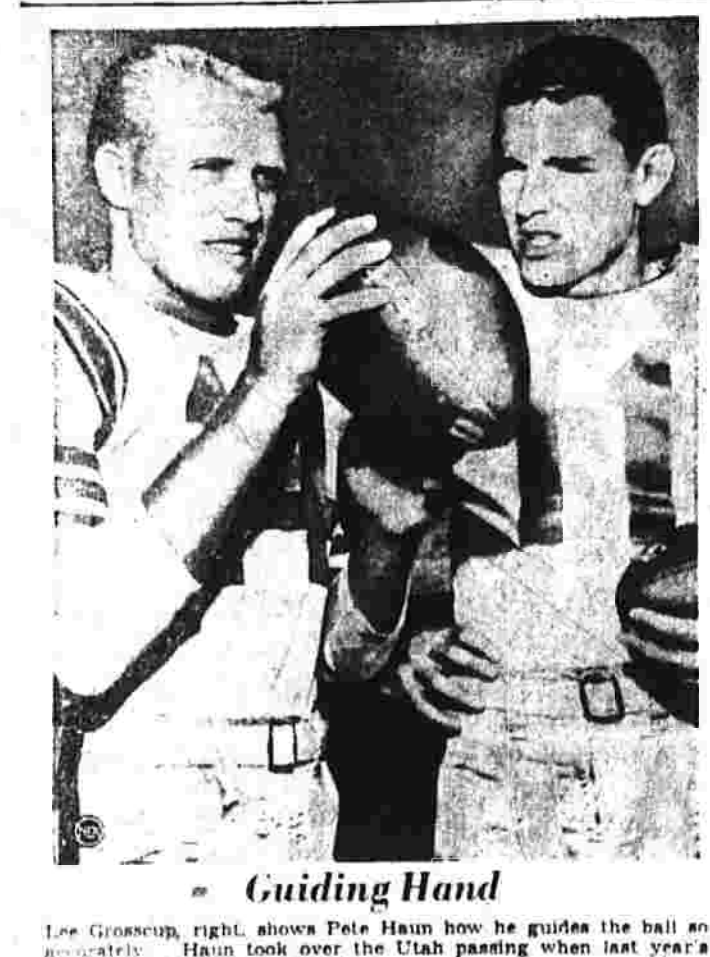
**Selected Produce For Your Thanksgiving...**

<b>CALIFORNIA PASCAL CELERY</b> bunch <b>15<sup>c</sup></b>	<b>INDIAN RIVER FLOTHOLD REDDLENS, PINK OR WHITE GRAPEFRUIT</b> 3 for <b>39<sup>c</sup></b>
<b>FANCY CUCUMBERS</b> 2 for <b>19<sup>c</sup></b>	<b>ITALIAN OR AMERICAN PARSLEY</b> lb. <b>10<sup>c</sup></b>
<b>Beads O' Bleach</b> In Safe Dry Form Package <b>43c</b>	<b>Trend</b> For Dishes and Fine Fabrics 2 1/2 Oz. <b>59c</b> Quart Size <b>75c</b>
<b>Blu-White</b> 2 Small Size <b>19c</b> Large Size <b>27c</b>	<b>Sweetheart Soap</b> 3 Regular Size <b>25c</b> 3 Bath Size <b>37c</b>
<b>Dailey Pickles</b> Kasher Dills <b>35c</b> Quart <b>35c</b> Kasher Spears <b>30c</b> Quart <b>30c</b>	<b>Bib Juices</b> All Natural Vitamins and Minerals Homogenized For The "Carriage" Trade Orange, Orange Apricot, Apple, Pineapple, Prune-Orange. <b>3 For 28c</b>
<b>Fluff-O-Matic Rice</b> In "No Work" Cooking Bags <b>39c</b>	<b>LIPTON TEA</b> THE "BARK" TEA 8 - 8.5c 48 - 85c
	<b>LIPTON SOUP MIXES</b> SOUPED BROWNIE 2c 1/2c NEW VEGETABLE 2c 1/2c TOMATO VEGETABLE 3c 1/2c CHICKEN 3c 1/2c GREEN PEAS 2c 1/2c 2c

**CHOKER EARRING SET** 50<sup>c</sup>



# Louisiana and Cal High in Football's Top Society



## East Hartford Choice Over Indians Thursday

For the fourth consecutive year neighboring East Hartford High School will rule an overwhelming favorite to turn back the two rivals which Thanksgiving Day morning at 11:30 at Memorial Field. Coach Hank Gird's Hornets have won the last three meetings by scores of 56-0 (1955), 25-0 (1956) and 30-13 (last season). The Bulls' Texans last won, 12-7, in '54.

## Winning Easy For NBA Coach As NBA Eed

By PAT BOLDUC  
School officials anticipate a crowd of 4,000 to 5,000. It marks the first time in four years the teams have played in Manchester. Since the game was switched to Thanksgiving Day, Manchester High School officials agreed to hold the contest in East Hartford until the field was ready for football.

## Two Bowls Set, Others Shaping Up

New York, Nov. 24 (AP)—Louisiana State and California, a couple of ragamuffin outfits last year that could win only a half dozen games between them, were high in college football's top society today preparing for important bowl assignments New Year's Day.

## Mitchell Rookie of Year

Halfback Bill Barnes vaults into the Cleveland Browns' and zone to score the Philadelphia Eagles first touchdown in the second quarter of yesterday's game. The Browns won 28-14, defeating the Eagles in the National Football League's first game of the season.

## Canucks Lose Third in Row To Boston Foe

New York, Nov. 24 (AP)—The Montreal Canadiens of the National Hockey League have been unable to win a home game since they were defeated by the Boston Bruins in a 4-1 victory last night.

## Red Heads Return

The All-American Red Heeds, nationally known girls basketball team, return to East Hartford Thursday night to engage the Burrhead Doveslets in an exhibition game.

## Big Favorite...

5 full glasses in every quart!  
Schmidt's...  
Schmidt's...  
Schmidt's...

## Sport Schedule

Thursday, Nov. 27  
Turkey Day Road Race, 10:30 a.m. at the New York State Fair, West Saugerties, N.Y.

## Horse to Watch

New York, Nov. 24 (AP)—Males down the name of Intentionally as the favorite to win the 1958 three-year-old turf classic next week.

## NBA at a Glance

Monday's Schedule  
Boston vs. Minneapolis at Chicago, 7 p.m.

# THE Herald Angle

By EARL YOST Sports Editor

## Sunday

Cool and threatening weather postponed the planned noon volleyball match between the two rivals which Thanksgiving Day morning at 11:30 at Memorial Field.

## Monday

Many bag production letters from many distant points, about 20 being received from Dick Hill, who is now in the employ of the U.S. Coast Guard.

## Tuesday

Early arrival of the department was Dr. Ed Ziegler, who is now in the employ of the U.S. Coast Guard.

## Wednesday

What odds will you give me on the Princeton-Dartmouth football game Saturday night? I am confident that the Princeton team will win.

## Thursday

Football and wrestling events were on the schedule for this cool Saturday and Sunday. The Princeton-Dartmouth football game was the main attraction.

## Friday

Wall Ferguson, three striper with an eye for 400 turkeys had a good day on Saturday night at the high school.

## Saturday

Football and wrestling events were on the schedule for this cool Saturday and Sunday. The Princeton-Dartmouth football game was the main attraction.

## Sunday

Football and wrestling events were on the schedule for this cool Saturday and Sunday. The Princeton-Dartmouth football game was the main attraction.

# Levits Top 'Eaters in Playoffs, 8-0

## Rick Daley Registers Only Tally

For the second straight season the handsome Roy Memorial Trophy will remain in possession of the Police Department, thanks to yesterday's victory by the Blue Devils over the Smoke Eaters.

## Thompson Entry No. 100 for Race

Receipt of Al Thompson's entry marked the 100th received for the 1958 All-Ivy League football team. The entry was received from the University of Pennsylvania.

## Week's Boxing

New York, Nov. 24 (AP)—Foley, whose status as a heavyweight contender was highly doubted, was expected to get a good fight tonight.

## Foy Memorial Queen Crowned

Princess Linda Sapenza was officially crowned the first Foy Memorial Queen yesterday at the School No. 1 Firehouse.

## Dartmouth Stands Atop World in New England

Boston, Nov. 24 (AP)—Dartmouth stands astride the New England college football world today after winning its first Ivy League title since 1938.

## Wild Wrestling Show Well Received Here

By EARL YOST  
All was serene at the beautiful Manchester High gym today last Saturday night. There was more action and excitement than doors could open.

## Tigers Would Trade Bill Hoelt For Yankees' Jerry Lumpe

Detroit, Nov. 24 (AP)—The Detroit Tigers are trying to trade Bill Hoelt to the New York Yankees for infielder Jerry Lumpe.

## Blades Victors

New Haven, Nov. 24 (AP)—The New Haven Blades defeated the league-leading Clinton Comets 3-1 in the first game of the season.

## All-Ivy League Team Numbers Top Students

New York, Nov. 24 (AP)—A team of student-athletes rated about 15 in the classroom and A plus on the gridiron represents the Ivy League this year.

## Pete Cooper \$2,000 Richer After Playoff Win over Ellis

West Palm Beach, Fla., Nov. 24 (AP)—Pete Cooper added \$2,000 to his bank account yesterday after winning the 1958 West Palm Beach Golf Tournament.

## Dartmouth Stands Atop World in New England

Boston, Nov. 24 (AP)—Dartmouth stands astride the New England college football world today after winning its first Ivy League title since 1938.

## Lowest Prices Anywhere!

A WINTERIZED COAST GARAGE AT NO EXTRA COST!  
FACTORY PRODUCED—SOLD DIRECT  
NOW A COMPLETE GARAGE Just 6 Sections, ready-to-assemble!

## Wild Wrestling Show Well Received Here

By EARL YOST  
All was serene at the beautiful Manchester High gym today last Saturday night. There was more action and excitement than doors could open.

## Tigers Would Trade Bill Hoelt For Yankees' Jerry Lumpe

Detroit, Nov. 24 (AP)—The Detroit Tigers are trying to trade Bill Hoelt to the New York Yankees for infielder Jerry Lumpe.

## Blades Victors

New Haven, Nov. 24 (AP)—The New Haven Blades defeated the league-leading Clinton Comets 3-1 in the first game of the season.

## Unlimited Choice of Styles

Select the style that suits you best... we engineer jobs customized to meet your requirements as to placement of doors, windows, roof, choice of exterior siding, etc. Result: custom design, efficiently produced by precision factory methods to give you the very finest in materials and workmanship at volume prices.

## FAMILY-PROOF! NEW PANELING FROM GEORGIA-PACIFIC

Even scotch, shoo-in men can't mar the beauty of new G-P Hardwood Paneling! Crayons, lipstick, alcohol, most common stains can't mar the fine-grained finish. Easy upkeep — no replacement — means beauty you'll enjoy as long as you live in your home. Choose from 9 handsome G-P Panelings now!

### KNOTTY PINE PANELING

Good lengths and widths. Board Foot 15c

### Manchester Beer

Why take less than Beer as Beer should be

255 CENTER ST. TEL. 3-3144

## Big Favorite...

5 full glasses in every quart!

### Schmidt's

SCHMIDT & SONS, INC. PHILA., PA.

SCHMIDT on TELEVISION  
Time: 7:00 P.M. (B.S.T.)—STATION WTNH-TV Channel 3

## 30 MINUTE INSTANT

Multiplies Fires Batteries  
Seal Covers Floor Mats

681 MAIN ST. MI 3-6771

## Wild Wrestling Show Well Received Here

By EARL YOST  
All was serene at the beautiful Manchester High gym today last Saturday night. There was more action and excitement than doors could open.

## A WINTERIZED COAST GARAGE

AT NO EXTRA COST!  
FACTORY PRODUCED—SOLD DIRECT  
NOW A COMPLETE GARAGE Just 6 Sections, ready-to-assemble!

NO MONEY DOWN—5 YEARS TO PAY

Unlimited Choice of Styles

CALL COLLECT! University 5-1181

GENTLEMEN: Please send me your valuable free booklet that contains a complete selection of Garage Models, Floor Plans and Descriptions. C-137

Name \_\_\_\_\_  
Street \_\_\_\_\_  
City \_\_\_\_\_  
State \_\_\_\_\_ Phone \_\_\_\_\_

Call Viall Coar's Factory on Sunday

COAST LUMBER Corp., Hamden, Conn.







About Town

Xi Gamma Chapter of Beta Sigma Phi will meet tomorrow night at 8 o'clock at the home of Mrs. Ermann Garaventa...

Engaged

Miss Martha Dana, 191 Oak St., Springfield, Conn., is engaged to be married to...

South Church Yuletide Fair Slated Dec. 3

"Christmas Tree Town" the annual fair of the South Church Yuletide Fair will be held at the church...

Thanksgiving Special

Thanksgiving Special... HALE'S Self Serve and Meat Dept. Thanksgiving Special...

Engaged

Miss Martha Dana, 191 Oak St., Springfield, Conn., is engaged to be married to...

Engaged

Miss Martha Dana, 191 Oak St., Springfield, Conn., is engaged to be married to...

Engaged

Miss Martha Dana, 191 Oak St., Springfield, Conn., is engaged to be married to...

Engaged

Miss Martha Dana, 191 Oak St., Springfield, Conn., is engaged to be married to...

Engaged

Miss Martha Dana, 191 Oak St., Springfield, Conn., is engaged to be married to...

Engaged

Miss Martha Dana, 191 Oak St., Springfield, Conn., is engaged to be married to...

Engaged

Miss Martha Dana, 191 Oak St., Springfield, Conn., is engaged to be married to...

Engaged

Miss Martha Dana, 191 Oak St., Springfield, Conn., is engaged to be married to...

Engaged

Miss Martha Dana, 191 Oak St., Springfield, Conn., is engaged to be married to...

Engaged

Miss Martha Dana, 191 Oak St., Springfield, Conn., is engaged to be married to...

Engaged

Miss Martha Dana, 191 Oak St., Springfield, Conn., is engaged to be married to...

Engaged

Miss Martha Dana, 191 Oak St., Springfield, Conn., is engaged to be married to...

Engaged

Miss Martha Dana, 191 Oak St., Springfield, Conn., is engaged to be married to...

Engaged

Miss Martha Dana, 191 Oak St., Springfield, Conn., is engaged to be married to...

Bladder Weakness... GENERAL TV SERVICE... Dues \$2.95 Plus Postage...

Bladder Weakness... GENERAL TV SERVICE... Dues \$2.95 Plus Postage...

Bladder Weakness... GENERAL TV SERVICE... Dues \$2.95 Plus Postage...

Bladder Weakness... GENERAL TV SERVICE... Dues \$2.95 Plus Postage...

Bladder Weakness... GENERAL TV SERVICE... Dues \$2.95 Plus Postage...

Bladder Weakness... GENERAL TV SERVICE... Dues \$2.95 Plus Postage...

Bladder Weakness... GENERAL TV SERVICE... Dues \$2.95 Plus Postage...

Bladder Weakness... GENERAL TV SERVICE... Dues \$2.95 Plus Postage...

Bladder Weakness... GENERAL TV SERVICE... Dues \$2.95 Plus Postage...

Bladder Weakness... GENERAL TV SERVICE... Dues \$2.95 Plus Postage...

Bladder Weakness... GENERAL TV SERVICE... Dues \$2.95 Plus Postage...

Bladder Weakness... GENERAL TV SERVICE... Dues \$2.95 Plus Postage...

Bladder Weakness... GENERAL TV SERVICE... Dues \$2.95 Plus Postage...

Bladder Weakness... GENERAL TV SERVICE... Dues \$2.95 Plus Postage...

Bladder Weakness... GENERAL TV SERVICE... Dues \$2.95 Plus Postage...

Bladder Weakness... GENERAL TV SERVICE... Dues \$2.95 Plus Postage...

Bladder Weakness... GENERAL TV SERVICE... Dues \$2.95 Plus Postage...

Bladder Weakness... GENERAL TV SERVICE... Dues \$2.95 Plus Postage...

Bladder Weakness... GENERAL TV SERVICE... Dues \$2.95 Plus Postage...

Bladder Weakness... GENERAL TV SERVICE... Dues \$2.95 Plus Postage...

Bladder Weakness... GENERAL TV SERVICE... Dues \$2.95 Plus Postage...

Bladder Weakness... GENERAL TV SERVICE... Dues \$2.95 Plus Postage...

Bladder Weakness... GENERAL TV SERVICE... Dues \$2.95 Plus Postage...

Bladder Weakness... GENERAL TV SERVICE... Dues \$2.95 Plus Postage...

Bladder Weakness... GENERAL TV SERVICE... Dues \$2.95 Plus Postage...

Bladder Weakness... GENERAL TV SERVICE... Dues \$2.95 Plus Postage...

Bladder Weakness... GENERAL TV SERVICE... Dues \$2.95 Plus Postage...

Bladder Weakness... GENERAL TV SERVICE... Dues \$2.95 Plus Postage...

Bladder Weakness... GENERAL TV SERVICE... Dues \$2.95 Plus Postage...

Bladder Weakness... GENERAL TV SERVICE... Dues \$2.95 Plus Postage...

Bladder Weakness... GENERAL TV SERVICE... Dues \$2.95 Plus Postage...

Bladder Weakness... GENERAL TV SERVICE... Dues \$2.95 Plus Postage...

Bladder Weakness... GENERAL TV SERVICE... Dues \$2.95 Plus Postage...

Bladder Weakness... GENERAL TV SERVICE... Dues \$2.95 Plus Postage...

Bladder Weakness... GENERAL TV SERVICE... Dues \$2.95 Plus Postage...

Bladder Weakness... GENERAL TV SERVICE... Dues \$2.95 Plus Postage...

Bladder Weakness... GENERAL TV SERVICE... Dues \$2.95 Plus Postage...

Bladder Weakness... GENERAL TV SERVICE... Dues \$2.95 Plus Postage...

Bladder Weakness... GENERAL TV SERVICE... Dues \$2.95 Plus Postage...

Bladder Weakness... GENERAL TV SERVICE... Dues \$2.95 Plus Postage...

Bladder Weakness... GENERAL TV SERVICE... Dues \$2.95 Plus Postage...

Bladder Weakness... GENERAL TV SERVICE... Dues \$2.95 Plus Postage...

Bladder Weakness... GENERAL TV SERVICE... Dues \$2.95 Plus Postage...

Bladder Weakness... GENERAL TV SERVICE... Dues \$2.95 Plus Postage...

Bladder Weakness... GENERAL TV SERVICE... Dues \$2.95 Plus Postage...

Bladder Weakness... GENERAL TV SERVICE... Dues \$2.95 Plus Postage...

Bladder Weakness... GENERAL TV SERVICE... Dues \$2.95 Plus Postage...

Bladder Weakness... GENERAL TV SERVICE... Dues \$2.95 Plus Postage...

Bladder Weakness... GENERAL TV SERVICE... Dues \$2.95 Plus Postage...

Bladder Weakness... GENERAL TV SERVICE... Dues \$2.95 Plus Postage...

Bladder Weakness... GENERAL TV SERVICE... Dues \$2.95 Plus Postage...

Bladder Weakness... GENERAL TV SERVICE... Dues \$2.95 Plus Postage...

Bladder Weakness... GENERAL TV SERVICE... Dues \$2.95 Plus Postage...

Bladder Weakness... GENERAL TV SERVICE... Dues \$2.95 Plus Postage...

Manchester Evening Herald. Price Five Cents. Vol. LXXVIII, No. 48. (Twenty Pages). Manchester, Conn., Tuesday, November 25, 1958.

Taipei Reports Revolt in China. Moderation Idea at Coffee Breaks.

Taipei, Nov. 23 (AP)—Nationalist officials today reported two bloody uprisings against the Communists in the mountainous region of the island of Formosa.

Washington, Nov. 23 (AP)—The big Three Western powers have formed a plan for firm common action to prevent being ousted from West Berlin, diplomatic officials said today in Berlin.

Washington, Nov. 23 (AP)—The big Three Western powers have formed a plan for firm common action to prevent being ousted from West Berlin, diplomatic officials said today in Berlin.

Washington, Nov. 23 (AP)—The big Three Western powers have formed a plan for firm common action to prevent being ousted from West Berlin, diplomatic officials said today in Berlin.

Washington, Nov. 23 (AP)—The big Three Western powers have formed a plan for firm common action to prevent being ousted from West Berlin, diplomatic officials said today in Berlin.

Washington, Nov. 23 (AP)—The big Three Western powers have formed a plan for firm common action to prevent being ousted from West Berlin, diplomatic officials said today in Berlin.